

Historic, archived document

Do not assume content reflects current scientific knowledge, policies, or practices.

Waynesboro Nurseries

INC.

WAYNESBORO, VA.

Branch Nursery: Boxwood Gardens, Afton, Virginia

SPRING 1936 AND FALL 1936

FRUIT TREES, ORNAMENTALS, AND LANDSCAPE SERVICE of the highest quality. The remarkable growth the Waynesboro Nurseries have made since their beginning fourteen years ago is convincing that our stock and service are pleasing. With only the best of plant material and service would it have been possible to have built up in such a short time the largest Nursery business in Virginia and one of the largest in the East. Our appeal has always been offering plant material of the highest quality, delivered in good condition at reasonable prices. We solicit your continued business on these terms.

OUR STOCK AND PRICES. Being governed strictly by price in buying Nursery Stock is false economy. The best is the cheapest, even though the initial cost is more. Our prices are based on furnishing vigorous, healthy trees true to name, grown and sold on a small margin of profit and delivered in first class condition. For the benefit of those who are willing to use small sizes of trees and plants and wait for them to grow, we offer the Mail Order Sizes in Shrubs and small sizes of Fruit Trees for less than standard sizes. Our small plants are healthy, true to name, and will give satisfactory results. We, however, believe in most cases it is economy to purchase medium or larger sizes.

WE PAY TRANSPORTATION CHARGES to points in Virginia and adjoining States. Instead of paying transportation to other States, we allow 10% discount from list price.

WE GUARANTEE SAFE DELIVERY and stock to be as represented in our catalogue.

TERMS. When remittance in full accompanies order, we allow a liberal premium in free stock. Orders for C.O.D. shipments are accepted and booked when a deposit of as much as 25% accompanies order.

WE FURNISH FREE, f.o.b. our shipping point, Ornamentals for replacing any reported within twelve months as being dead, provided the original shipment was paid for not later than thirty days after delivery and the stock was given reasonable attention by the purchaser. Fruit Trees and Berry Plants for replacing those reported within twelve months after date of delivery as being dead will be replaced f.o.b. our shipping point at one-half catalogue list price. Replacements for Ornamentals which were not paid for within thirty days after delivery but paid for in full at the time report is made will be furnished f.o.b. our shipping point at one-half catalogue list price.

VARIETIES AND QUANTITIES. In case you do not find listed the variety, quantity, or size desired, write for further information.

MAKING UP ORDERS. Do not fail to give sizes, quantities, and varieties wanted. Also give shipping point if different from post office, and approximately when you would like your stock shipped. We furnish 6 at dozen rate, 30 at 100 rate, and 300 at 1,000 rate, with the exception of Berry Plants, Bulbs and Perennials, which are sold not less than 50 at 100 rate, and 500 at 1000 rate, with exceptions noted.

NOTICE OF WARRANTY. While we are very careful to keep our varieties true to name, in the event they should prove otherwise, we cannot be responsible for more than the amount we receive for the stock.

FRUIT TREES

Planters in various communities demand different sizes and varieties, so we offer a large list of both. All of our stock is clean, healthy, true to name, and bears a State Certificate of Inspection. Our list of varieties is carefully worked out. Whether you are planting a commercial orchard or a small home orchard you can make a suitable selection from our list.

APPLES

The following varieties for home orchards will furnish Apples from the earliest to the latest: Yellow Transparent, Summer Rambo, Williams Red, Delicious, Lowry, Winesap, and N. W. Greening.

STANDARD VARIETIES

One Year Whips

	Each	Doz.	100	1000
18-24 in.	\$.35	\$3.50	\$25.00	\$200.00
2-3 ft.40	4.00	30.00	250.00
3-4 ft.50	5.00	35.00	300.00
4-6 ft.65	6.50	40.00	350.00

Two and Three Year Branched

	Each	Doz.	100	1000
3-5 ft.	\$.75	\$7.50	\$45.00	\$400.00
4-6 ft.90	9.00	50.00	450.00

VARIETIES

- Albemarle Pippin.** Yellowish green. Winter.
- Ben Davis.** Well-known red Winter Apple. Poor quality but popular for export market.
- Bonum.** Red Fall Apple, medium size. Excellent quality for export.
- Delicious.** Red and green striped. One of the best known Winter varieties. Excellent quality.
- Early Harvest.** Well-known early greenish yellow Apple. Good in its season.
- Fall Cheese.** 2 yr. only. Medium size, red, juicy Fall Apple.
- Fall Pippin.** 2 yr. only. Yellow. An old-time Fall Apple having a place in every home orchard.
- Grimes Golden.** 1 yr. only. The most popular late Fall and early Winter yellow Apple.
- Hyslop Crab.** Excellent for jellies.
- Jonathon.** 1 yr. only. A late Fall, red export Apple. Much in demand for exporting.
- King David.** Another medium-sized red late Fall Apple.
- Macoun.** 1 yr. only. Dark red, good size, rich flavor. Introduced by New York Experiment Station. Regular bearer.
- Maiden Blush.** Favorite Midsummer home and commercial variety. Golden background, red cheek.
- Mammoth Black Twig.** Large, dark red. Long keeper. Good quality. Rather shy bearer.
- McIntosh.** A red Winter variety in New England States, late Fall in Virginia.
- Milton.** 1 yr. only. Belongs to McIntosh family but ripens a month earlier.
- Mother.** 2 yr. only. Late bloomer. Medium sized, red export variety.
- Northern Spy.** An old-time favorite home orchard variety.
- N. W. Greening.** Large Winter green Apple.
- Paragon.** Resembles Black Twig, but is more abundant bearer.
- Red Spy.** 1 yr. only. Resembles old Spy but is much redder and colors earlier in the season.
- Rome Beauty.** A well-known striped Winter Apple. Very near sweet.
- Smokehouse.** Aug.-Sept. Striped. Favorite home orchard variety.

Summer Rambo. Undoubtedly one of the best Summer varieties of its season. Large, striped, excellent quality. Ripens in August.

Sweet Paradise. Most popular Fall sweet Apple.

Tolman Sweet. Yellow Winter sweet Apple.

TOWN TALK

Town Talk is more than a novelty and a curiosity. Conceive six different varieties growing on one tree. You can have Apples ripening from June until late Fall, when the late varieties may be gathered for Winter use. Town Talk is not a commercial proposition but ideal when space permits only two to four trees. Imagine a tree bearing six varieties at one time and being able to enjoy ripe Apples from your own back lot from June until November, then possibly having some to store for Winter use.

3 yr., 6 to 7 ft. trees, \$2.75 each, two for \$5.00, four for \$9.50, delivered.

Stayman. 1 yr. only. One of our most popular commercial Apples of the Winter varieties. Large, red, green striped.

Virginia Beauty. Resembles Delicious in quality and shape; darker and extra fine quality.

Winesap. Standard commercial variety. Medium size. Solid red.

Yellow Transparent. 1 yr. only. The earliest Apple on our list. A very popular early Apple. Medium size and excellent for cooking purposes.

YORK IMPERIAL. The most extensively planted Apple in Virginia for commercial purposes. Greenish background, red cheek, good quality and keeper. In demand for both local and foreign markets.

YORKING

On May 28, 1935, was awarded United States Patent No. 125.

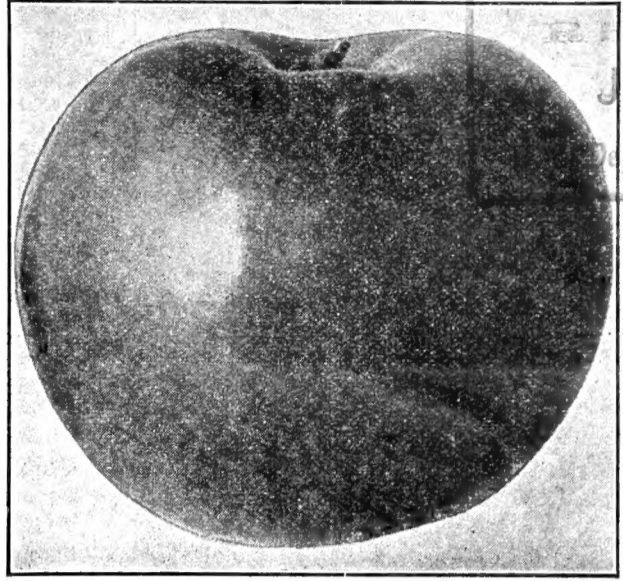
A New Solid Red York having all the good qualities of the famous old York and the tremendous advantage of being a Solid Red, a pleasing purplish red, and coloring two weeks earlier than the standard York.

Yorking is one of only a few Apples ever to be honored with a United States Patent. You can imagine what a Solid Red York—every Apple on the tree being a solid, bright red—would mean to the grower. That is exactly what we offer in the Yorking.

Only a limited supply of Yorking trees will be available for Fall '36 and Spring '37 at the following prices:

	Each	Doz.	100	1000
1 yr. 18-24 in. \$.60	\$ 6.00	\$40.00	\$350
1 yr. 2-3 ft.65	6.50	45.00	400
1 yr. 3-4 ft.80	8.00	55.00	450
2 yr. 4-6 ft.	1.25	12.50		

YORKING
The York Supreme



One of few apples ever to be honored with a U. S. Patent. U. S. Patent No. 125

NEW VARIETIES

	Each	Doz.	100	1000
1 yr. 18-24 in. \$.40	\$ 4.00	\$30.00	\$250
1 yr. 2-3 ft.50	5.00	35.00	300
1 yr. 3-4 ft.65	6.50	40.00	350
1 yr. 4-6 ft.75	7.50	45.00	400
2 yr. 3-5 ft.85	8.50	55.00	450
2 yr. 4-6 ft.	1.00	10.00	65.00	550

NEW SOLID RED DELICIOUS

A "Super" Delicious. An Apple with all the good qualities of the Common Delicious: Same size, same shape, same flavor, same texture and same ripening period, but the New Solid Red Delicious colors two to three weeks earlier and colors solid red without trace or sign of stripe, even into the stem and blossom ends. It can be picked "hard ripe" with full color. It has excellent storage qualities and is the most beautiful Apple ever seen. Write for further information.

LOWRY

Beautiful dark red Winter Apple, enjoying the reputation of selling for the highest price of any Apple grown in Virginia. It sells for \$1.00 to \$2.00 more per barrel than standard varieties. Always in demand both as a home variety and a commercial Apple. The Lowry should be in every orchard whether home or commercial.

NEW RED ROME

Same as Rome Beauty with the exception of being a solid red.

NEW SOLID RED STAYMAN

1 yr. only. A solid red Stayman. Sport of the well-known Stayman, having all the good qualities of the Common Stayman and the big advantages of being solid red in color instead of pale striped greenish coloring found in the Common Stayman. Write for further information.

NEW SOLID RED JONATHAN

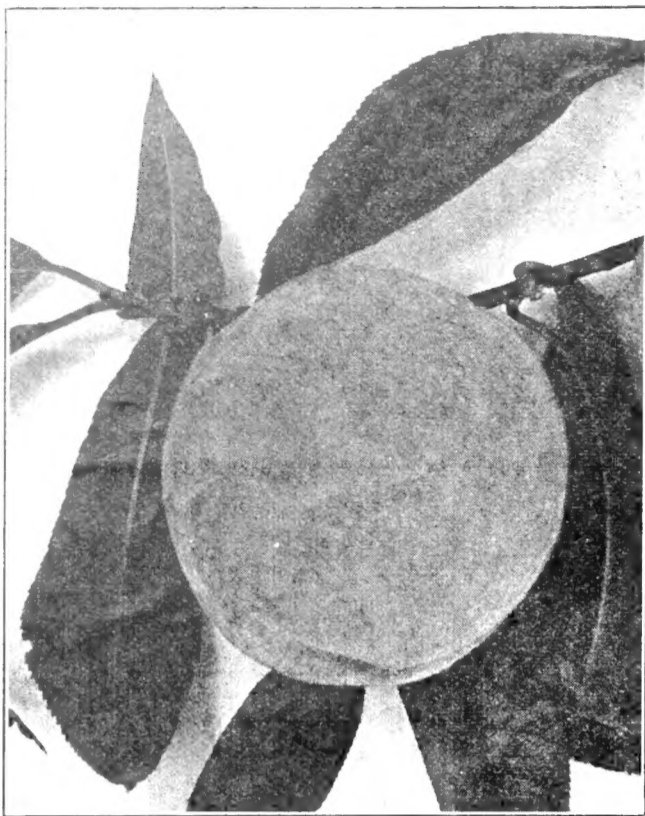
1 yr. only. Same size, quality and shape as Common Jonathan and differs only by coloring two weeks earlier and coloring solid red.

Lady. Small; golden background, red blush; highly flavored; excellent quality. Demands unusually high prices, having sold for as much as \$20.00 per barrel on U. S. markets and is equally as popular on export markets. Trees very scarce.

New Red Duchess. Differs from the Standard Duchess by having more color and coloring earlier in the season.

Turley. 1 yr. only. Somewhat resembles Stayman but has better color and is somewhat larger. Does not crack. Yellow flesh. More regular bearer than the Stayman.

Yellow Delicious. 1 yr. only. Resembles Grimes Golden but larger, more prolific, and earlier bearer.



Golden Jubilee Peach

CHERRIES

Plant Cherries commercially for profit. They are easily grown and prices for the fruit are always high. They produce large crops comparatively early and are not affected by many diseases or pests. Write for more information about Cherries. **Bing.** Good dark red sweet. Best shipper. **Black Tartarian.** Well-known commercial sweet. **Early Richmond.** Best known sour. **GOVERNOR WOOD.** Most popular wax variety. **Lambert.** Favorite dark purple sweet. **Large Montmorency.** Best large red sour. **Napoleon.** New wax variety. Yellow, red cheek.

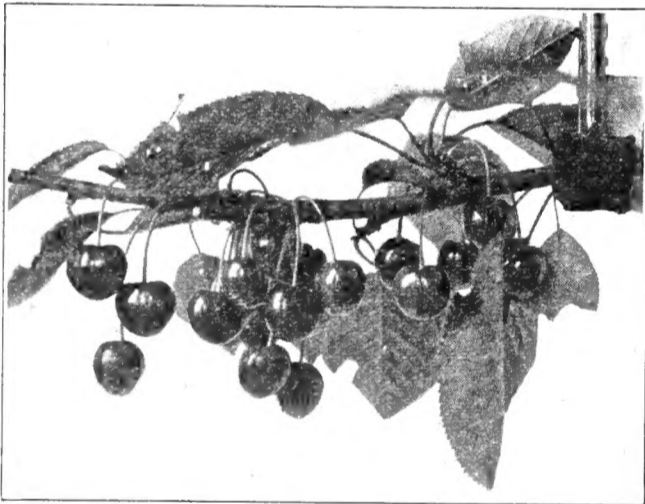
STANDARD VARIETIES

	Each	Doz.	100
2-3 ft.	\$.75	\$ 7.50	\$50.00
3-4 ft.	1.00	10.00	65.00
4-6 ft.	1.20	12.00	85.00

NEW VARIETIES

Hackett. Earliest dark sweet Cherry.
Greenwood. Largest Cherry grown. Dark purple. Small seed, sweet.

	Each	Doz.	100
2-3 ft.	\$1.00	\$10.00	\$75.00
3-4 ft.	1.20	12.00	85.00
4-6 ft.	1.40	14.00	



Large Montmorency Cherry

PEARS

Pears will continue to be scarce and sell for good prices as few have been planted within the past twenty years. Plant now for both home use and market. **Bartlett.** Well known. Most popular Summer Pear. Ripens August. **Cayuga.** Improved Seckel. 2-3 ft. and 3-4 ft. sizes only. **Clapp's Favorite.** A young and early bearer. Very good quality. **Garber.** Rapid grower, good quality. Splendid where assortment is demanded. September. **Kieffer.** The most extensively planted Pear. Quality not as good as some, but one of our best canners. **Koonce.** Early, medium size, yellow with carmine cheek. Heavy bearer, blight resisting. July and August. **Seckel.** Small, sweet, excellent quality. Fine for pickling, canning, or eating from the hand.

	Each	Doz.	100
2-3 ft.	\$.75	\$ 7.50	\$50.00
3-4 ft.	1.00	10.00	65.00
4-6 ft.	1.20	12.00	85.00

A GOOD TIME TO PLANT PEACH

Peach have always been a quick money crop and one of the most profitable fruit crops. Peach planting for the past five years has been light and we predict planting made at this time on suitable land affords an opportunity for greater profits than ever.

MUCH DEPENDS ON THE TREES YOU PLANT

Our Peach Trees are budded on the old-time native hardy seedling Peach, giving them the best root system possible. Our sandy loam soil is also conducive to a vigorous, fibrous root system. Our modern tree digger enables us to dig trees with all their roots. Our experience in growing many million trees has taught us how to handle and deliver in such condition that the best of results may be expected. With the many advantages we have in growing Peach we can quote our trees at very reasonable prices. In some cases cost no more than trees you could not afford to plant. For your convenience we are listing our Peach in ripening order. If more complete descriptions are required write us or consult our local representative.

USE PARADOW AND SAVE YOUR PEACH TREES FROM BORERS

Variety	Ripening Period	Class	Description
Mayflower.....	June 15th	Clingstone	Sells because of earliness
Red Bird.....	June 20th	Clingstone	White, large, firm, red, good shipper
Alton.....	July 5th	Semi-free	Large, good quality
Early Rose.....	July 10th	Semi-cling	White, one of the best of the season
Carman.....	July 20th	Semi-free	White, regular bearer
GOLDEN JUBILEE	July 20th	Freestone	Yellow, large, good quality
Hiley.....	July 25th	Freestone	White. Resembles Belle of Georgia
Rochester.....	July 25th	Semi-free	Yellow, medium size, fair quality
Vedette.....	July 25th	Freestone	New Yellow Peach resembling Elberta
Champion.....	August 1st	Semi-free	White, large, sure bearer
Slappy.....	August 1st	Freestone	Yellow, medium size, excellent quality
Early Crawford.....	August 5th	Freestone	Yellow, old-time favorite
South Haven.....	August 5th	Freestone	New early Yellow. Good quality.
Belle of Georgia.....	August 10th	Freestone	White, favorite canning variety
Elberta.....	August 15th	Freestone	Popular Yellow Freestone
Hale.....	August 20th	Freestone	Yellow, large, good shipper
Late Crawford.....	August 20th	Freestone	Favorite yellow
Shippers' Late Red.....	August 25th	Freestone	Closely resembles Elberta
Stump.....	Sept. 1st	Freestone	White, favorite home orchard variety
Salway.....	Sept. 1st	Freestone	Yellow, best of its season
Heath.....	Sept. 25th	Clingstone	Most popular late white variety

18-24 in. and 2-3 ft. furnished only in Alton, Belle of Ga., Champion, Elberta, Golden Jubilee, Hale, Hiley, Red Bird, Shipper's Late Red and Slappy.

	Each	Doz.	100	1000
18-24 in.	\$.35	\$3.50	\$15.00	\$120.00
2-3 ft.45	4.50	18.00	140.00
3-4 ft.60	6.00	27.00	220.00
4-6 ft.75	7.50	35.00	300.00

PLUMS

Plums require little space and are often planted in orchards between Apple trees. We consider the following the most desirable varieties:

	Abundance Burbank Damson	Wickson	German Prune Green Gage Italian Prune
		Each	Doz. 100
2-3 ft.		\$.75	\$ 7.50 \$50.00
3-4 ft.		1.00	10.00 65.00
4-6 ft.		1.20	12.00 85.00

QUINCES

A very popular fruit which is seldom found on the market, but always in demand. Quinces demand from \$3.00 to \$4.00 per bushel. Orange is the best variety. Champion is another good variety. Varieties: Orange and Champion.

	Each	Doz.	100
2-3 ft.	\$.75	\$ 7.50	\$50.00
3-4 ft.	1.00	10.00	65.00
4-5 ft.	1.20	12.00	85.00

APRICOTS and NECTARINES

can be grown wherever Peaches can be grown. Many planters are neglecting to plant these fine profit-making fruits. We offer the hardy Russian variety of Apricot and Sure-Crop, a new, improved, hardy Nectarine.

	Each	Doz.	100
2-3 ft.	\$.75	\$ 7.50	\$50.00
3-4 ft.	1.00	10.00	65.00
4-6 ft.	1.20	12.00	85.00

GRAPES

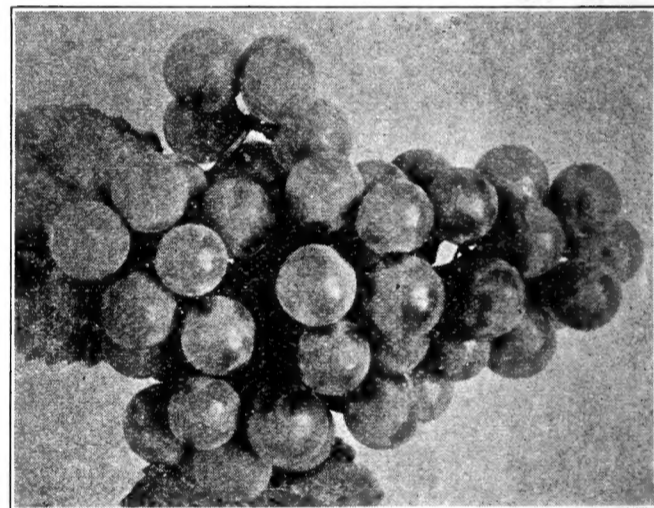
Grapes require little space and attention. Surely you have a place for a few. The collection we offer will furnish Grapes from the earliest to the latest. **Brighton.** One of the most popular reds. Excellent quality. **Moore's Early.** Best early blue. **Concord.** Most popular blue. **White Niagara.** Large perfect bunch. Midseason. **Delaware.** Red. Late. Good keeper. **Catawba.** Red. Excellent wine Grape.

GRAPES	Each	Doz.	100	1,000
1 yr. vines	\$0.35	\$3.50	\$20.00	\$180.00
2 yr. vines45	4.50	25.00	225.00

NEW VARIETIES

Caco. New variety; considered the best red. **Ives.** Purple wine variety. 1 yr. only. **Lutie.** New, large red Grape, unsurpassed in quality.

	Each	Doz.	100
1 yr. vines	\$0.45	\$4.50	\$25.00
2 yr. vines65	6.50	35.00



White Niagara

SMALL FRUITS

Only a little space is required to grow enough Berries for home use. Small space can be profitably devoted to growing Berries. These small fruits are proving to be profitable commercial crops.

RASPBERRIES

CHIEF. Red. Sport of the famous Latham; ten days earlier. **Cumberland.** Best purple. **Cuthbert.** Well known red. **LATHAM.** Brilliant red; mosaic-free. Heavy bearer. **Plum Farmer.** Dependable black. **St. Regis.** Best Everbearing. Red. \$1.25 per 25; \$3.85 per 100; \$33.00 per 1,000

BLACKBERRIES, DEWBERRIES, and YOUNGBERRIES

Early Harvest. No doubt the best quality for home use. Also profitable commercial variety. **Eldorado.** Large, juicy, excellent flavor. Most popular commercial variety. **Lucretia Dewberry.** Very prolific, large and sweet; equal in size to the largest Blackberry. Succeeds everywhere. **Youngberry.** Large wine-color fruit resembling Blackberries. Excellent quality and very prolific. \$1.50 per 25, \$4.50 per 100, \$35.00 per 1,000.

FIGS

Brown Turkey and Celestial. 2-3 ft., \$1.00 each; \$10.00 per dozen.

GOOSEBERRIES

Houghton. Most popular red. **Downing.** Large. Improved white. 35c each, \$3.50 per doz., \$20.00 per 100

CURRANTS

Red Cross. Large. Most popular red. **Wilder's.** Early red. Medium size. 35c each, \$3.50 per doz., \$20.00 per 100

RHUBARB

Myatt's Linnaeus. Early, long, tender stalks, neither tough nor stringy. 30c each, \$3.00 per doz., \$15.00 per 100.

ASPARAGUS

Pedigreed Washington. There are a lot of different varieties. Some nurserymen list as many as half a dozen, but the Pedigreed Washington has been proven far superior to the old varieties, so why plant the others? We list only the Pedigreed Washington.

1 yr., field grown roots: 75c per doz., \$2.50 per 100, \$12.00 per 1,000.
2 yr., field grown roots: \$1.00 per doz., \$3.50 per 100, \$15.00 per 1,000.

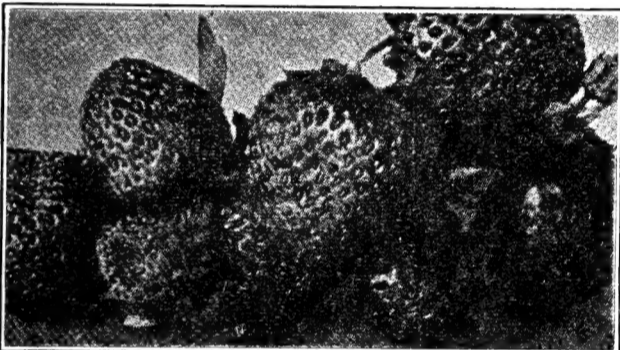
STRAWBERRIES

There is more variation in the price of Strawberry plants than most Nursery Stock. Why is it? There is a reason. Some dig plants from old bearing patches and sell the plants as a by-product. They must necessarily be sold at a low price as the more experienced planters will not use such plants. Hence such growers must find customers who buy where the cheapest plants are to be had, regardless of whether they are old or new. Delivery costs also are to be considered. We pay transportation charges and guarantee safe arrival. We furthermore agree to furnish at half list price plants for replacing any plants which may be lost the first season from causes beyond our control.

Varieties are listed in ripening order, so you may make a selection ripening from the earliest to the latest.

FAIRFAX—A New Sensation. Early, prolific, unusually productive, large and firm. Introduced by U. S. Department of Agriculture.

DORSETT. Another U. S. Department of Agriculture introduction. Early, productive, frost resistant, large, firm. One of the most promising new varieties.



Blakemore Strawberries

Klondyke. An old favorite. Early, sweet.

Premier. The most popular commercial variety. Good size, excellent quality.

Blakemore. Recommended by Department of Agriculture as an outstanding new variety. Supercedes Premier in yield and quality.

Aroma. The most extensively planted commercial variety. Midseason.

Big Joe. Extra large. Midseason.

\$2.00 per 100, \$3.75 per 250, \$5.00 per 500,
\$7.50 per 1,000, \$35.00 per 5,000

EVERBEARING VARIETIES

Gem. Starts fruiting in May, after being transplanted in April. As large as the Mastodon and five times as prolific. The ideal home Berry. Per 50, \$1.75; per 100, \$3.00; per 250, \$6.00.

Mastodon. Large and most popular Everbearing until the recent introduction of the Gem. Per 100, \$2.50; per 250, \$5.00; per 500, \$8.00; per 1,000, \$15.00.

NUT TREES

Black Walnuts. Easily grown, profitable for nuts as well as timber. Our nursery grown trees are easily transplanted and will prove profitable. 3-4 ft., \$1.00 each, \$10.00 per doz., \$65.00 per 100; 4-6 ft., \$1.50 each, \$15.00 per doz.

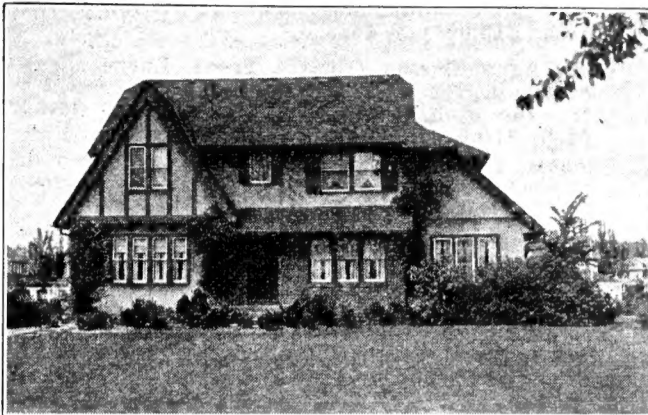
Butternut. 4-6 ft., \$1.50 each; 6-8 ft., \$2.00.

Japanese Walnuts. 3-4 ft., \$1.50 each; \$15.00 doz.
English Walnuts. These nuts promise to become a profitable commercial crop in Virginia and adjoining states. It has been found by actual test that they can be grown as successfully in this section as anywhere in the United States. The trees thrive and the fruit is of as good quality as that produced elsewhere. A tree ten miles from us has been known to produce as much as \$80.00 worth of nuts in one season. We offer the Virginia Thin Shell, 18-24 in., Mail Order Size, 75c each, \$7.50 per doz.; 2-3 ft., \$1.00 each, \$10 per doz., \$65 per 100; 3-4 ft., \$1.50 each, \$15 per doz., \$85 per 100.

PECANS

Stuart. Paper shell, large. Bears young, makes good yield. 2-3 ft., \$1.50 each; \$15.00 per doz., \$85.00 per 100.

ORNAMENTAL AND LANDSCAPE DEPARTMENT



From our selection of choice Shrubs, Evergreens, Shade Trees, Roses, Tuberous Plants, and Perennials, a selection can be made suitable for any requirement.

Landscape Service. We employ a professional landscape architect and a number of practical, well trained field men whose services are always available for our customers. If we can be of any service to you, do not hesitate to call on us.

Our standard grade of stock is grown chiefly for the larger landscape developments and is not to be compared to light Mail Order Grades often quoted. Even the smaller stock we list as "Mail Order Grade" is well rooted, branched, and much of it will give immediate effect.

Make use of our Landscape Department. We have established it for your benefit and it is at your command. If too far away for one of our landscape men to see you, send in measurements of your grounds and a photo of the house for suggestions.

DECIDUOUS SHRUBS

All Shrubs quoted at 35c each will be furnished at \$25.00 per 100; all 50c Shrubs at \$35.00 per 100; all 75c Shrubs at \$60.00 per 100, except as noted. Ask for special prices on larger quantities.

ABELIA. Evergreen; grows 4-6 ft. tall. Pink blossoms all Summer. Mail Order Size, 60c each; 18-24 in., \$1.00 each, \$10.00 per doz.; 2-3 ft., \$1.50 each, \$15.00 per doz.; 3-4 ft., \$1.85 each, \$20.00 per doz.

Almond, Flowering. Dwarf shrub. Pink or white. Blossoms in March. 2-3 ft., 85c each, \$8.50 per doz.

Althea (Rose-of-Sharon). Old-time favorite shrub. Pink, white, purple, or red. Mail Order Size, 35c each; 2-3 ft., 50c each, \$5.00 per doz.

Aralia, Five-Leaved. Useful for covering rocky slopes. 2-3 ft., 75c each, \$7.50 per doz.

BARBERRY, NEW RED. Same as the Thunbergi, except that the foliage is a deep blood red. Mail Order Size, 45c each, \$4.50 per doz.; 12-18 in., 60c each, \$6.00 per doz.; 18-24 in., 75c each, \$7.50 per doz., \$45.00 per 100.

Barberry Thunbergi. Mail Order Size, 30c each, \$3.00 per doz., \$15.00 per 100; 18-24 in., 50c each, \$5.00 per doz., \$35.00 per 100; 2-3 ft., 75c each, \$7.50 per doz., \$45.00 per 100.

BEAUTYBUSH (Kolkwitzia). A new shrub from China. Long, arching branches covered in the Spring with clusters of small, tubular, pink flowers. One of the most popular new shrubs recently introduced. 18-24 in., 75c each, \$7.50 per doz.; 2-3 ft., \$1.00 each, \$10.00 per doz.; 3-4 ft., \$1.50 each, \$15.00 per doz., 4-5 ft., \$2.00 each, \$20.00 per doz.

Buckthorn. Handsome, deep green foliage, black berries. 6 ft., \$2.00 each.

Bush Honeysuckle, fragrantissima, morrowi, tatarica rubra. Pink, white or red flowers that appear with the first robin. Mail Order Size, 35c each; 2-3 ft., 50c each, \$5.00 per doz.; 3-4 ft., 75c each, \$7.50 per doz.

Butterflybush (Summer Lilac). Purple blooms resembling Lilacs. Blossoms first season. Excellent as cut flower. Very fragrant. Blooms from June to November. Mail Order Size, 35c each; 2-3 ft., 50c each, \$5.00 per doz.

Callicarpa Purpurea (Chinese Beauty Berry). Graceful, dwarf shrub. White flowers during July and August followed by purple berries. 2-3 ft., 75c each, \$7.50 per doz.

Calycanthus (Sweethrubb). Very fragrant, chocolate brown blossoms in early Spring. Mail Order Size, 60c each; 18-24 in., 75c each, \$7.50 per doz.; 2-3 ft., \$1.00 each, \$10.00 per doz.

Coralberry, Chenaulti. New hybrid, improved. Grows 3-4 ft. Covered with coral-red berries which hang on until mid-winter. 18-24 in., 75c each, \$7.50 per doz.

Cotoneaster Acutifolia. Fast growing, spreading shrub. Light pink flowers in June, purple berries in September. 3-4 ft., \$1.00 each, \$10.00 per doz.; 4-6 ft., \$1.50 each, \$15.00 per doz.

CRAPEMYRTLE. A favorite shrub in the South. Red, pink, or purple. Mail Order Size, 75c each; 2-3 ft., \$1.00 each, \$10.00 per doz.; 3-4 ft., \$1.50 each, \$15.00 doz.

Daphne Mezereum. Lilac colored flowers in Spring. 15-18 in., 65c each, \$6.50 per doz.; 18-24 in., 85c each, \$8.50 per doz.

Desmodium. Abundant, small lavender blossoms in September and October. Mail Order Size, 35c each; 3 yr. clumps, 50c each, \$5.00 doz.

Deutzia Gracilis. A small shrub with slender, arched branches. Showy white flowers in graceful nodding racemes. 12-15 in., 50c each, \$5.00 per doz.

Deutzia, Standard. Mail Order Size, 35c each; 2-3 ft., 50c each, \$5.00 per doz.; 3-4 ft., 75c each, \$7.50 per doz.

Dogwood, Golden Stem. Dwarfish plant, golden twigs, white blossoms and white berries. 2-3 ft., 75c each, \$7.50 per doz.

DOGWOOD, PINKFLOWERING. A valuable, distinctive shrub. 18-24 in., \$1.00 each, \$10.00 per doz.; 2-3 ft., \$1.50 each, \$15.00 per doz.; 3-4 ft., \$2.25 each, \$24.00 per doz.; 4-5 ft., B&B, \$4.50 each; 5-6 ft., B&B, \$6.00 each; 7-8 ft., B&B, \$7.50.

Dogwood, Red Stem. Bright red twigs, creamy white flowers and white berries. Very showy. 2-3 ft., 75c each, \$7.50 per doz.; 3-4 ft., \$1.00 each, \$10.00 per doz.

DOGWOOD, WHITEFLOWERING. Beautiful, broad white blossoms in Spring. 2-3 ft., 75c each, \$7.50 per doz., \$55.00 per 100; 3-4 ft., 95c each, \$9.50 per doz., \$75.00 per 100; 4-6 ft., \$1.75 each, \$18.00 per doz., \$120.00 per 100.

Doubleflowering Peach. Pink, red, or white. Resembles peach blossoms, but double. Mail Order Size, 60c each; 3-4 ft., \$1.00 each, \$10.00 doz.

Euonymus Alatus (Winged Burningbush). Dwarfish upright shrub with chocolate-colored flowers followed by red berries. 3-4 ft., \$1.50 each, \$15.00 per doz.; 4-5 ft., \$2.00 each.

Forsythia. We offer fortunei, intermedia, suspensa and viridissima. Drooping, yellow, bell-shaped flowers in early Spring. Effective in clumps and as a hedge. Mail Order Size, 35c each; 2-3 ft., 50c each, \$5.00 per doz.; 3-4 ft., 75c each, \$7.50 per doz.

Forsythia Spectabilis. Newest and most desirable Forsythia. Medium grower, profuse bloomer over a longer period than other varieties. Mail Order Size, 45c each; 2-3 ft., 65c each, \$6.50 per doz.; 3-4 ft., \$1.00 each, \$10.00 per doz.

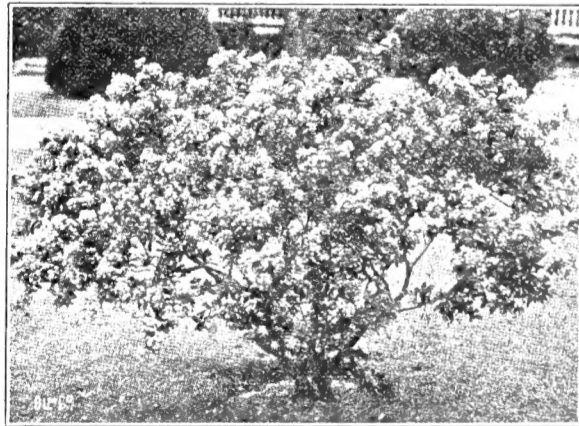
Golden Ligustrum. Dwarf. Golden foliage. 18-24 in., 75c each, \$7.50 per doz.; 2-3 ft., \$1.00 each, \$10.00 per doz.; 3-4 ft., \$2.00.

Hawthorne, Double Pink, Double Red, and Double White. 3-4 ft., \$1.75 each, \$17.50 per doz.; 4-5 ft., \$2.25 each, \$25.00 per doz.

Hawthorne, English. 4-5 ft., \$2.25 each, \$25.00 per doz.

Highbush Cranberry. White flowers, purple berries. 2-3 ft., 75c each, \$7.50 per doz.; 3-4 ft., \$1.00 each.

Hydrangea, French Blue. 2 yr., 75c each, \$7.50 per doz.; 3 yr., \$1.00 each, \$10.00 per doz.



Crapemyrtle

Hydrangea, Hills of Snow. 18-24 in., 50c each, \$5.00 per doz.; 2-3 ft., 75c each, \$7.50 per doz.

Hydrangea, Oakleaf. 3 yr., \$1.00 each, \$10.00 per doz.

Hydrangea Paniculata Grandiflora. Mail Order Size, 35c each; 18-24 in., 50c each, \$5.00 per doz.; 2-3 ft., 75c each, \$7.50 per doz.

Hypericum Prolificum. Unique, low-growing shrub with rich yellow flowers. 18-24 in., 75c each, \$7.50 per doz.

Joba Privet. Grayish green foliage and snowy white flowers in June. Bluish berries in Winter. 18-24 in., 85c each, \$8.50 per doz.; 2-3 ft., 50c each, \$5.00 per doz., \$30.00 per 100.

Japanese Bloodleaf Maple. Blood red foliage in Spring and Summer; dark purple in Fall. A very effective, small tree. 15-18 in., \$2.50 each; 18-24 in., \$3.50 each.

Japanese Flowering Quince. Lovely red flowers in April. Also produces fruit which makes delicious jellies and marmalade when mixed with Apples. 18-24 in., 75c each, \$7.50 per doz.; 2-3 ft., \$1.00 each, \$10.00 per doz.; 3-4 ft., \$1.50 each, \$15.00 per doz.



Hydrangea, French Blue

Japanese Greenleaf Maple. Similar to the Bloodleaf Maple, except that the foliage is green. 18-24 in., \$1.25 each.

Kerria Japonica. A mass of golden yellow flowers in Spring. Twigs remain green during Winter. 18-24 in., 75c each, \$7.50 per doz.

Lilac, Named Varieties:

- Charles Sargent. New purple.
- Charles X. Single, reddish purple.
- Ludwig Spaeth. Single blue.
- Marie Legraye. Single, pure white.
- Michael Buchner. Double, pale lilac.
- Mme. Lemoine. Double, white.
- Pres. Grevy. Double, blue.
- Rothomagensis. Reddish purple.
- Rubra de Marlay. Single, reddish purple.

Mail Order Size, 45c each; 18-24 in., 65c each, \$6.50 per doz.; 2-3 ft., \$1.00 each, \$10.00 doz.; 3-4 ft., \$1.50 each, \$15.00 doz.

Lilac, Purple and White. Mail Order Size, 35c each; 2-3 ft., 75c each, \$7.50 per doz.; 3-4 ft., \$1.50 each, \$15.00 per doz.

Mockorange, Boquet Blanc. Dwarf, free bloomer. 12-15 in., 60c each; \$6.00 per doz.

Mockorange, Coronarius. Creamy white. Very fragrant blossoms. Mail Order Size, 35c each; 2-3 ft., 50c each, \$5.00 doz.; 3-4 ft., 75c each, \$7.50 doz.; 4-5 ft., \$1.00 each, \$10.00 doz.

Mockorange, Virginal. Fragrant, semi-double flowers through most of Summer. 2-3 ft., 75c each, \$7.50 doz.; 3-4 ft., \$1.00 each, \$10.00 doz.

Paul's Scarlet Thorn. 3-4 ft., \$1.75 each, \$20.00 per doz.; 4-6 ft., \$2.50 each, \$25.00 per doz.

Prunus Pissardi. Blood red foliage throughout the Summer. Mail Order Size, 75c each; 3-4 ft., \$1.00 each, \$10.00 per doz.; 4-5 ft., \$1.50 each, \$15.00 per doz.

Purple Fringe, Smoke Bush. 2-3 ft., 75c each, \$7.50 per doz.; 3-4 ft., \$1.25 each, \$12.50 doz.

Pussy Willow. Large shrub, useful in border or as specimen. 3-4 ft., 50c each, \$5.00 per doz.; 4-6 ft., 75c each, \$7.50 per doz.

REDBUD (Judas Tree). 3-4 ft., 75c each, \$7.50 per doz.; 4-6 ft., \$1.00 each, \$10.00 doz.; 6-8 ft., \$1.50 each, \$15.00 doz.

Regal Privet. Strong, hardy type. Graceful, drooping effect. 18-24 in., 35c each, \$3.50 per doz., \$25.00 per 100; 2-3 ft., 50c each, \$5.00 per doz.; 3-4 ft., 75c each, \$7.50 per doz.

Rhodotypos (Jethead). Graceful shrub with white Spring flowers, followed by bunches of glistening black berries, which remain through the Summer and Winter. 18-24 in., 75c each, \$7.50 per doz.

Snowball, Common. 18-24 in., 75c each, \$7.50 per doz.; 2-3 ft., \$1.00 each, \$10.00 per doz.

Snowball, Japanese. 18-24 in., 75c each, \$7.50 per doz.; 2-3 ft., \$1.00 each, \$10.00 per doz.

Snowberry. Mail Order Size, 35c each; 2-3 ft., 50c each, \$5.00 per doz.; 3-4 ft., 75c each, \$7.50 per doz.

Spiraea, Anthony Waterer. Dwarf pink flowering shrub. Blooms all Summer. Mail Order Size, 35c each; 12-15 in., 50c each, \$5.00 per doz.; 15-18 in., 75c each, \$7.50 per doz.; 18-24 in., \$1.00 each, \$10.00 per doz.

Spiraea Billardi. Medium height. Pink. Mail Order Size, 35c each; 2-3 ft., 50c each, \$5.00 per doz.; 3-4 ft., 75c each, \$7.50 per doz.

Spiraea Froebeli. Medium grower. Pink blossoms throughout the Summer. Mail Order Size, 35c each; 18-24 in., 50c each, \$5.00 per doz.

Spiraea, Golden. Tall growing. White flowers in early Spring; golden foliage throughout Summer. Mail Order Size, 35c each; 2-3 ft., 50c each, \$5.00 doz.; 3-4 ft., 75c each, \$7.50 doz.

Spiraea, Korean. A handsome new introduction resembling Spiraea van houttei but flowers are larger. 2-3 ft., 75c each, \$7.50 per doz.

Spiraea Prunifolia. The old-time Bridalwreath. 2-3 ft., 75c each, \$7.50 per doz.

Spiraea Thunbergi (Japanese Spiraea). Dwarf habit, earliest blooming Spiraea; white flowers. 18-24 in., 75c each, \$7.50 per doz.; 2-3 ft., \$1.25 each, \$12.00 per doz.

SPIRAEA VANHOUTTEI. Most popular of all the Spiraeas. Mail Order Size, 25c each; 2-3 ft., 40c each, \$4.00 per doz.; 3-4 ft., 60c each, \$6.00 per doz.

Tamarix Africana and Amurense. Pink flowers; light, feathery foliage. Mail Order Size, 35c each; 2-3 ft., 50c each, \$5.00 per doz.; 3-4 ft., 75c each, \$7.50 per doz.

Viburnum carlesii. Recent introduction from Korea. Mauve-pink blossoms. 18-24 in., \$1.50 each, \$15.00 per doz.

Vitex Agnus-Castus (Chaste Tree). Large shrub or small tree with beautiful blue spikes. 2-3 ft., 75c each, \$7.50 per doz.; 3-4 ft., \$1.00 each, \$10.00 per doz.

Weigela, Eva Rathke. Most popular, dwarf, red. Mail Order Size, 45c each; 18-24 in., 75c each, \$7.50 doz.; 2-3 ft., \$1.00 each, \$10.00 doz.

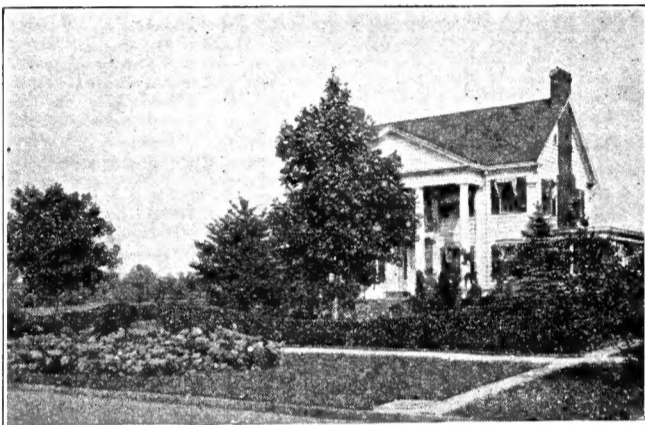
Weigela Henderson. Strong grower. Dark pink flowers. Mail Order Size, 35c each; 2-3 ft., 50c each, \$5.00 per doz.; 3-4 ft., 75c each, \$7.50 per doz.

Weigela Rosea. Pink. Mail Order Size, 35c each; 2-3 ft., 50c each, \$5.00 per doz.; 3-4 ft., 75c each, \$7.50 per doz.

WHITE FRINGE. Large, showy shrub with big, shiny leaves and lacelike white flowers. 2-3 ft., \$1.00 each, \$10.00 per doz.; 3-4 ft., \$1.50 each; 4-6 ft., \$2.00 each.

Winterberry. One of the most beautiful red berryed plants grown. 2-3 ft., \$1.25 each, \$12.50 per doz.

Winter Jasmine. Almost an evergreen. Offers a profusion of yellow blossoms during warm Winter days. 2 yr., 75c each, \$7.50 per doz.



Amur River Privet Hedge

PRIVET HEDGE

A Privet hedge is much cheaper than a fence and is far more attractive. It not only serves the purpose of a fence, but is decidedly more ornamental. Do not confuse our Privet hedge with the lighter grades often offered as of the same height. Our Privet has been grown in nursery rows for two or more years and has been cut back to the ground after its first year. It has many more branches and a much better root system. Therefore, our plants will make a beautiful hedge in a shorter time than the light plants of equal height.

AMUR RIVER PRIVET (Evergreen)

New evergreen, Southern type. Makes a very dense, compact hedge, resembling Boxwood. It holds its foliage throughout the Winter in Virginia and adjoining states.

	100	1,000
18-24 in., well branched	\$ 7.50	\$ 70.00
2-3 ft., heavily branched	9.00	85.00
3-4 ft., heavily branched	12.00	110.00
4-5 ft., heavily branched	15.00	

CALIFORNIA PRIVET

The most extensively planted Privet hedge. Too well known to need description.

	100	1,000
2 yr., 18-24 in., well branched	\$ 7.00	\$ 65.00
2 yr., 2-3 ft., heavily branched	8.00	75.00
3 yr., 3-4 ft., very heavy	11.00	100.00
3 yr., 4-5 ft., very heavy	15.00	

LODENSE PRIVET

15-18 in., 50c each, \$5.00 per doz.

REGAL PRIVET SEEDLINGS

18-24 in. \$3.00 per doz., \$15.00 per 100

EVERGREENS

Evergreens are indispensable in present-day landscaping. Few plantings are complete without them. They are delightfully beautiful the year 'round. In Spring when they start their new growth they are most interesting. During the Summer they present an excellent background for flowering shrubs and during the Winter their live, green color adds an expression of cheerfulness and warmth.

We take pride in our evergreens and our method of preparing them for our customers. We shear them carefully to make them uniform, compact specimens. When we prepare them for shipment we take them up with the soil in which they were grown and tie the soil firmly about the roots with burlap and rope. You will find that our evergreens will grow almost without exception.

Ask for quotations on other sizes of Evergreens.

WE PAY TRANSPORTATION CHARGES



Canadian Hemlock

ARBORVITAE

Arborvitae, American. One of the best known, tall growing evergreens. Mail Order Size, \$1.25; 18-24 in., \$1.75; 24-30 in., \$2.00; 30-36 in., \$2.50; 3-4 ft., \$3.50; 4-5 ft., \$5.00; 5-6 ft., \$6.00.

Arborvitae, American Pyramidal. Tall, columnar and compact. 15 in., Mail Order Size, \$1.50; 18-24 in., \$1.75; 24-30 in., \$2.25; 30-36 in., \$3.00; 3-4 ft., \$4.00; 4-5 ft., \$6.00.

Arborvitae, Berckmans Golden. One of the most useful dwarf compact Arborvitae. 12-15 in., \$1.50; 15-18 in., \$2.00; 18-24 in., \$3.00.

Arborvitae, Chinese. Resembles the American Arborvitae, but makes quicker growth. 15-18 in., Mail Order Size, 85c; 24-30 in., \$1.50; 30-36 in., \$2.25; 3-4 ft., \$2.75.

Arborvitae, Chinese Compacta. Compact, semi-dwarf, suitable for foundation plantings. 12-15 in., \$1.25; 15-18 in., \$1.75; 18-24 in., \$2.25; 2-3 ft., \$2.75.

Arborvitae, Chinese Golden. Resembles Chinese Pyramidal Golden, but is more spreading. 18-24 in., \$2.00; 24-30 in., \$2.50; 30-36 in., \$3.00.

Arborvitae, Chinese Pyramidal. Tall, compact, pyramidal type. 18-24 in., \$2.25; 2-3 ft., \$2.75; 3-4 ft., \$3.75.

Arborvitae, Chinese Pyramidal Golden. Compact, golden pyramidal. 18-24 in., \$2.25; 24-30 in., \$2.75; 3-4 ft., \$3.50.

Arborvitae, Erecta. A semi-dwarf, round-headed type. 18-24 in., \$2.25.

Arborvitae, Geo. Peabody. Most popular American Golden Arborvitae. Like American Arborvitae, except color. 18-24 in., \$1.75; 24-30 in., \$2.25; 30-36 in., \$3.00; 3-4 ft., \$3.75; 4-5 ft., \$4.50.

Arborvitae, Globe Dwarf. Excellent for foundation planting. 12 in., \$1.75; 15 in., \$2.25; 18 in., \$2.75; 24 in., \$3.75; 30 in., \$5.75.

Arborvitae, Goldspire. Compact, columnar evergreen, with excellent golden foliage. 18-24 in., \$1.75; 2-3 ft., \$2.25; 3-4 ft., \$3.25.

Arborvitae, Golden-Tipped. Suitable for foundation and group plantings. 15-18 in., \$1.50; 18-24 in., \$2.50; 2-3 ft., \$3.00.

Arborvitae, Hovey's Dwarf. Dense. Ideal for beds, borders and cemeteries. 18-24 in., \$2.25.

Arborvitae, Siberian. Low growing. 12 in., Mail Order Size, \$1.50; 18 in., \$2.25; 24 in., \$2.75; 30 in., \$3.75; 3-4 ft., \$4.75.

Arborvitae, Spiralis. Upright spiral growth, 2-3 ft., \$2.75; 3-4 ft., \$3.50.

Arborvitae, Tom Thumb. Very dwarf, low and spreading. 12-18 in., \$1.75; 18-24 in., \$2.25; 2-3 ft., \$3.50; 3-4 ft., \$4.50.

CEDRUS DEODARA. 2-3 ft., \$3.25; 3-4 ft., \$4.25; 4-5 ft., \$5.75; 5-7 ft., \$7.50.

Cedrus Libani (Cedar of Lebanon). 2-3 ft., \$3.25; 3-4 ft., \$4.25; 4-5 ft., \$5.75; 5-6 ft., \$7.50.

Cryptomeria Japonica. A popular Japanese Evergreen. Tall pyramidal type. Rapid grower. 2-3 ft., \$2.75 each; 3-4 ft., \$3.50; 4-5 ft., \$4.50.

Cypress, Blue. 18-24 in., \$2.75; 2-3 ft., \$3.75; 3-4 ft., \$4.75.

FIR, BALSAM. 2-3 ft., \$3.75; 3-4 ft., \$5.75; 4-6 ft., \$7.50; 6-8 ft., \$10.00.

Fir, Concolor. 2-3 ft., \$4.25; 3-4 ft., \$5.75.

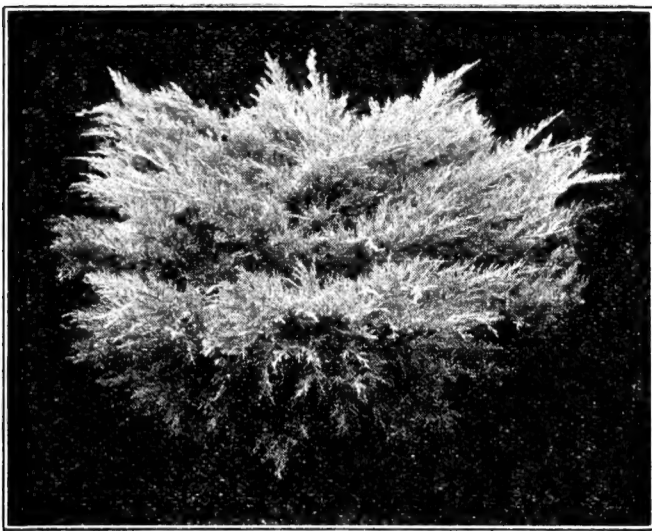
Fir, Douglas. 2-3 ft., \$3.50; 3-4 ft., \$4.25; 4-5 ft., \$5.00; 5-6 ft., \$6.50.

HEMLOCK, CANADIAN. Tall growing. 18-24 in., \$2.25; 2-3 ft., \$3.00; 3-4 ft., \$4.50; 4-5 ft., \$5.00; 6-7 ft., \$8.00; 7-8 ft., \$10.00.

JUNIPER, ANDORA. Prostrate. Beautiful bronze color during Winter. 18-24 in., \$2.25; 24-30 in., \$2.75; 30-36 in., \$3.50.

Juniper, Canadian. Prostrate. Excellent for foundation planting. 15-18 in., \$2.25; 18-24 in., \$2.75; 2-3 ft., \$3.50.

Juniper, Canadian Semi-Prostrate. 30-36 in., \$3.00; 3-4 ft., \$4.00.



Juniper, Pfitzer's

Juniper, Chinese Variegated (*J. Chinensis Albo-variegata*). White tipped, blue gray foliage. Very choice columnar Juniper. 3-4 ft., \$5.00; 4-5 ft., \$6.00.

Juniper Columnaris. 18-24 in., \$3.00; 2-3 ft., \$3.75.

Juniper, Greek (*J. excelsa stricta*). Slow growing; beautiful gray blue foliage. 15-18 in., \$2.25; 18-24 in., \$2.75; 2-3 ft., \$3.25.

Juniper, Irish. Bluish, pyramidal. 15 in., Mail Order Size, \$1.25; 18-24 in., \$1.75; 2-3 ft., \$2.25; 3-4 ft., \$3.75; 4-5 ft., \$5.00; 5-6 ft., \$6.00.

JUNIPER, PFITZER'S. Low growing. 15-18 in., \$1.75; 18-24 in., \$2.25; 24-30 in., \$3.00; 30-36 in., \$3.75; 3-4 ft., \$4.75; 4-5 ft., \$6.00

Juniper, Prostrate. 24-30 in. spread, \$2.75; 30-36 in., \$3.75.

JUNIPER, SAVIN. 15-18 in., \$1.35; 18-24 in., \$1.85; 24-30 in., \$2.40; 30-36 in., \$3.25; 3-4 ft., \$4.75.

Juniper, Virginiana Cannarti. Compact; columnar habit; green foliage. 18-24 in., \$2.50; 2-3 ft., \$3.00; 3-4 ft., \$4.00.

Juniper, Virginiana Glauca. Pyramidal type. Silver foliage. 18-24 in., \$3.00; 2-3 ft., \$3.75; 3-4 ft., \$4.50.

Pine, Austrian. Tall growing. Used as specimens or in backgrounds. 18-24 in., \$2.25; 2-3 ft., \$3.00; 3-4 ft., \$4.00; 4-5 ft., \$5.00; 5-6 ft., \$6.50.

Pine, Mugho. Very dwarf variety. 12-15 in., \$1.75; 15-18 in., \$2.25; 18-24 in., \$3.00; 24-30 in., \$4.00; 30-36 in., \$5.00; 3-4 ft., \$7.50.

Pine, Scotch. A beautiful specimen evergreen. 18-24 in., \$1.75; 2-3 ft., \$2.50; 3-4 ft., \$3.50; 4-5 ft., \$4.50; 6-8 ft., \$10.00.

PINE, WHITE. Fast growing. Silvery foliage. 2-3 ft., \$2.25; 3-4 ft., \$3.00; 4-5 ft., \$4.00; 5-6 ft., \$5.00; 6-7 ft., \$6.00.

Retinospora Filifera. Threadlike Cypress. 15-18 in., \$1.25; 18-24 in., \$1.75; 2-3 ft., \$2.75; 3-4 ft., \$3.50; 4-6 ft., \$5.00.

Retinospora Obtusa Cripsi. Golden dwarf. 12-15 in., \$2.00; 18-24 in., \$2.50.

Retinospora Pisifera. Fast growing, medium height. 18-24 in., \$1.25; 2-3 ft., \$1.75; 3-4 ft., \$3.00; 4-5 ft., \$4.75; 5-6 ft., \$6.00.

RETINOSPORA PISIFERA AUREA. Smooth, golden green foliage. Fast growing. 18-24 in., \$1.50; 2-3 ft., \$2.00; 3-4 ft., \$3.00; 4-5 ft., \$3.75.

Retinospora Pisifera Sawara. Resembles *Retinospora plumosa*, faster grower. 18-24 in., \$1.75; 2-3 ft., \$2.25; 3-4 ft., \$3.00; 4-5 ft., \$3.75.

Retinospora Plumosa. Plumlike Cypress. 15 in., Mail Order Size, \$1.25; 18-24 in., \$1.75; 2-3 ft., \$2.25; 3-4 ft., \$3.00.



Pine, Mugho

Retinospora Plumosa Aurea. 15 in., \$1.25; 18-24 in., \$1.75; 2-3 ft., \$2.25; 3-4 ft., \$3.00; 4-5 ft., \$3.75.

Retinospora Squarrosa Veitchi (Silver Cypress). 15 in., \$1.75; 18 in., \$2.25; 4-6 ft., \$8.00.

Spruce, Colorado Blue. 18 in., \$4.50; 24 in., \$6.00; 30 in., \$8.00; 36 in., \$10.00; 3-4 ft., \$15.00.

Spruce, Koster. Grafted, selected Colorado Blues. 18-24 in., \$8.00; 2-3 ft., \$12.50.

Spruce, Norway. 15-18 in., 85c; 18-24 in., \$1.60; 2-3 ft., \$1.85; 3-4 ft., \$3.00; 4-5 ft., \$4.50; 5-6 ft., \$6.00; 6-8 ft., \$10.00.

Spruce, White. 3-4 ft., \$4.50; 4-5 ft., \$6.00.

Yew, Canadian, English, or Japanese. Slow growing dwarf evergreens. Prefer some shade. Suitable for rockeries or foundation plantings. 12-18 in., \$2.50; 18-24 in., \$3.00; 2-3 ft., \$4.00.

These handsome plants are becoming very popular. Many of them are flowering types, bearing even more brilliant and more profuse blooms than some of the deciduous shrubs. See "Rho-Za-Grow" on page 8 for soil conditioner to be used on some of the Broad-Leaved Evergreens.

Azalea, Dwarf (*Hinodegiri* and *Amoena*). Evergreen foliage. Bright fiery red flowers in Spring. 6-8 in., \$1.00; 8-10 in., \$1.50; 10-12 in., \$2.00, \$22.00 per doz. Use Rho-Za-Grow.

Azalea (*Flame* or *Calendulacea*). Most brilliant orange red flowering shrub yet known. 18-24 in., \$2.25; 2-3 ft., \$2.75. Use Rho-Za-Grow.

Azelea Mollis. Dwarf, bushy, well-branched. Various shades of orange, yellow and red. 12-15 in., \$1.50. Use Rho-Za-Grow.

Barberry. Dwarf evergreen, fine for rockery. Dark green foliage. Compact grower. 10-12 in., \$1.25; \$12.50 per doz.

Barberry Julianiae. Upright grower. Glossy green foliage, which hangs on all winter. 15-18 in., \$1.50 each.

Barberry, Verruculosa. Dwarf grower. Slender, light green foliage, silver underneath. 12-15 in., \$1.50 each.

Barberry, Wilsoni. An exceptionally good evergreen variety. Deep green Winter color. 18-24 in., \$1.25; 2-3 ft., \$1.75.

Boxwood, Japanese. 12-15 in., balled, 75c each, \$7.50 per doz.; 15-18 in., \$1.00 each.

BOXWOOD, SEMPERVIRENS

Large Growing Type

4-6 in., from beds	\$0.25	\$ 2.25	\$ 10.00
6-8 in., transplants	.35	3.50	15.00
8-10 in., transplants	.45	4.50	20.00
12-15 in., sheared, balled	1.25	12.00	
15-18 in., sheared, balled	2.00	22.50	
18-24 in., sheared, balled	2.50	27.50	
24-30 in., sheared, balled	3.75	40.00	300.00
30-36 in., sheared, balled	4.50	50.00	375.00
36-42 in.	6.50	75.00	

Other sizes quoted on request.

Broad-Leaved Evergreens

Boxwood, Suffruticosa. Dwarf type, slow growing.

	Each	Doz.	100
3-4 in., from beds	\$.25	\$2.25	\$10.00
4-6 in., from beds	.35	3.50	15.00
6-8 in., transplants	.45	4.50	30.00
8-10 in., transplants	.60	6.00	45.00
10-12 in., specimens, balled	2.00	22.50	150.00
12-15 in., specimens, balled	2.75	30.00	

Cotoneaster Francheti. Upright, dense shrub. Pink flowers in June. Red fruit. 18-24 in., \$2.00; 2-3 ft., \$2.50; 3-4 ft., \$3.00.

Cotoneaster Horizontalis. Low-spreading plants, desirable for rock garden and evergreen bed. Bright berries. 18-24 in., \$2.00; 2-3 ft., \$2.50.

Cotoneaster Microphylla. Prostrate. Small, deep green foliage. 18-24 in., \$2.50; 2-3 ft., \$3.50.

Cotoneaster Pannosa (Silverleaf Cotoneaster). Evergreen shrub. Red fruit in Fall. 18-24 in., \$2.00; 2-3 ft., \$2.50; 3-4 ft., \$3.50.

Daphne Cneorum (Garland Flower). Dwarf, flat plant with small foliage. Wiry, little stems tipped with dense clusters of rose pink, fragrant flowers. 10-12 in., \$1.75; 12-15 in., \$2.25.

Elaeagnus (Russian Olive). Silvery green foliage. Fragrant blossoms, late Fall. 18-24 in., \$2.00; 2-3 ft., \$2.50; 3-4 ft., \$3.50.

English Laurel. 18-24 in., \$2.25; 2-3 ft., \$2.75; 3-4 ft., \$3.50.

EUONYMUS JAPONICA. 15-18 in., \$1.25; 18-24 in., \$1.50; 2-3 ft., \$2.25; 3-4 ft., \$3.00.

Euonymus Japonica Variegata. Like green form, except leaves are silver variegated. 15-18 in., \$1.25; 18-24 in., \$1.75.

EUONYMUS PATENS. Best Euonymus grown. Yellow flower, red berries. 18-24 in., \$1.50; 2-3 ft., \$2.00; 3-4 ft., \$2.75.

Euonymus Pulchellis. Dwarf Evergreen suitable for edging. 8-10 in., 50c each, \$5.00 per doz., \$35.00 per 100; 10-12 in., 75c each, \$7.50 per doz., \$60.00 per 100.

Evergreen Viburnum (*Viburnum rhytidophyllum*). 2-3 ft., \$3.50.

Holly, American. 18-24 in., \$2.25; 2-3 ft., \$3.00; 3-4 ft., \$4.50; 4-5 ft., \$6.00.

Holly, English. 18-24 in., \$2.75.

Ilex Crenata. 15-18 in., \$1.50. Use Rho-Za-Grow.

Kalmia (Mountain Laurel). 18-24 in., \$2.75. Use Rho-Za-Grow.

LIGUSTRUM JAPONICUM (Japanese Privet). 2-3 ft., \$1.00, \$10.00 per doz.; 3-4 ft., \$1.50, \$15.00 per doz.

Ligustrum Lucidum (Glossy Privet). 15-18 in., \$1.25; 18-24 in., \$2.00; 2-3 ft., \$2.75; 3-4 ft., \$3.50.

Lonicera Nitida. 12-15 in., \$2.00, \$20.00 per doz.; 18-24 in., \$2.50.

Magnolia Glauca. Resembles *Magnolia Grandiflora*; small leaves; white, fragrant blossoms. 2-3 ft., \$3.00; 3-4 ft., \$4.00.

MAGNOLIA GRANDIFLORA. 18-24 in., \$2.50; 2-3 ft., \$3.00; 3-4 ft., \$4.00; 4-5 ft., \$6.00; 6-7 ft., \$8.00.

Mahonia Aquifolia. 18-24 in., \$1.75; 2-3 ft., \$2.75; 3-4 ft., \$3.50.

Mahonia Japonica. 18-24 in., \$2.25; 2-3 ft., \$3.00; 3-4 ft., \$3.50.

NANDINA DOMESTICA. 12-15 in., \$1.25; 15-18 in., \$1.75; 18-24 in., \$2.25; 24-30 in., \$3.00.

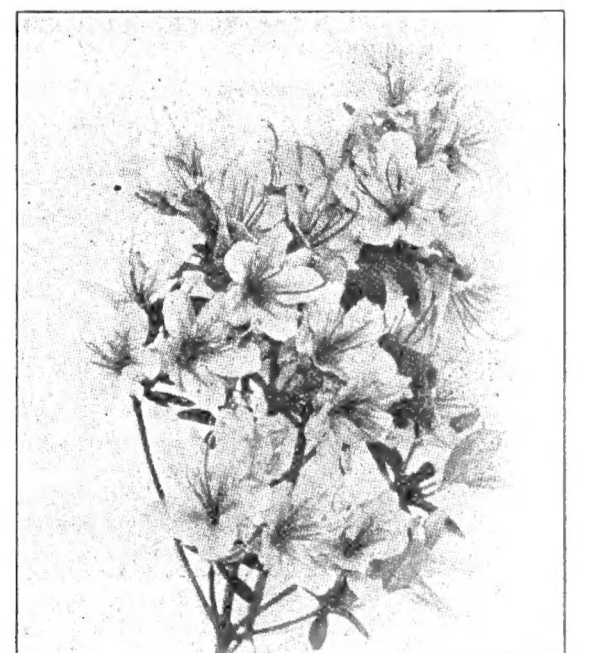
Photinia Serrulata. White flowers followed by red berries. 18-24 in., \$2.25; 2-3 ft., \$3.00; 3-4 ft., \$4.00.

Pyracantha Angustifolia. Spreading habit. Orange yellow fruit. 18-24 in., \$2.00; 2-3 ft., \$2.75.

PYRACANTHA YUNNANENSIS. Vigorous grower; large, glossy leaves; red fruit in abundance; one of the best. 18-24 in., \$2.00; 2-3 ft., \$2.75.

Rhododendron Catawbiense. 18-24 in., \$2.25; 24-30 in., \$3.00; 3-4 ft., \$5.00. Use Rho-Za-Grow.

Rhododendron Maximum. 18-24 in., \$2.00; 2-3 ft., \$3.00; 3-4 ft., \$4.00. Use Rho-Za-Grow.



Azalea Hinodegiri



Boxwood, Sempervirens

SHADE TREES

- Asl, American White. Well-known popular shade tree. Excellent for campuses. 8-10 ft., \$1.75 each, \$17.50 per doz.; 10-12 ft., \$2.50 each, \$25.00 per doz.; 12-15 ft., \$4.50 each, \$45.00 per doz.
- Ash, European Mountain. Small tree; noted for its red berries. 4-6 ft., \$1.00 each, \$10.00 per doz.; 6-8 ft., \$1.50 each, \$15.00 per doz.
- Beech, American. 6-8 ft., \$4.00 each.
- Birch, Cutleaf Weeping. Graceful weeping. White bark. 5-6 ft., \$2.00 each, \$20.00 doz.; 6-8 ft., \$3.00 each, \$30.00 per doz.
- Birch, White. Slender; white bark. 8-10 ft., \$3.50 each; 2-2½ in. caliper, \$5.00 each; 2½-3 in. caliper, \$7.50.
- Birch, Yellow. 6-8 ft., \$2.00 each, \$20.00 per doz.; 8-10 ft., \$2.50 each, \$25.00 per doz.
- Catalpa Bungei. Small, umbrella-like tree. 3-4 ft., \$1.50 each, \$15.00 per doz.; 4-5 ft., \$2.00 each, \$20.00 per doz.; 5-6 ft., \$2.50 each, \$25.00 doz.; 6-7 ft., \$3.00 each, \$30.00 doz.
- Elm, American. Famous old shade tree; conspicuous as a street tree in Washington and New England cities. 6-8 ft., \$1.75 each, \$17.50 per doz.; 8-10 ft., \$2.25 each, \$22.50 per doz.; 10-12 ft., \$3.00 each, \$30.00 per doz.; 12-15 ft., \$4.50 each, \$45.00 per doz.; 2-2½ in. caliper, \$5.00 each; 2½-3 in. caliper, \$8.00 each.

CHINESE ELM

Graceful as a Birch. Rapid growing as the Poplar. Beautiful as the Maple.

Recently introduced by the United States Department of Agriculture and pronounced by the Department in Yearbook of 1926:

"As a shade, windbreak, and avenue tree, the Chinese Elm has proved to be the most successful introduction of this kind thus far attempted.

"A rapid grower, with slender, almost wiry branches. It is one of the first trees to leaf out in the Spring, and the last to shed its foliage in the Fall. Throughout the long season the leaves remain a beautiful green and are remarkably free from the usual plant diseases and insect injuries so common in many of the other Elms."

	Each	Doz.	100
6-8 ft.	\$2.00	\$20.00	\$125.00
8-10 ft.	2.75	30.00	200.00
1½-2 in. caliper	3.50	37.50	275.00
2-2½ in. caliper	4.75	48.00	
2½-3 in. caliper	6.50	72.00	

Flowering Crabs. Very ornamental dwarf, Spring flowering trees in following varieties: Coronaria (Native Sweet Crab), Bechtels, Eleyi, Floribunda, Nople, Japanese, Sargent. 3-4 ft., \$1.00 each, \$10.00 per doz.; 4-6 ft., \$1.50 each, \$15.00 per doz.

Ginkgo (Maidenhair Tree). 3-4 ft., \$1.00 each, \$10.00 per doz.; 4-6 ft., \$1.50 each.

Gum, Sweet. 4-6 ft., \$1.00 each, \$10.00 per doz.; 6-8 ft., \$2.50 each; 8-10 ft., \$3.25 each.

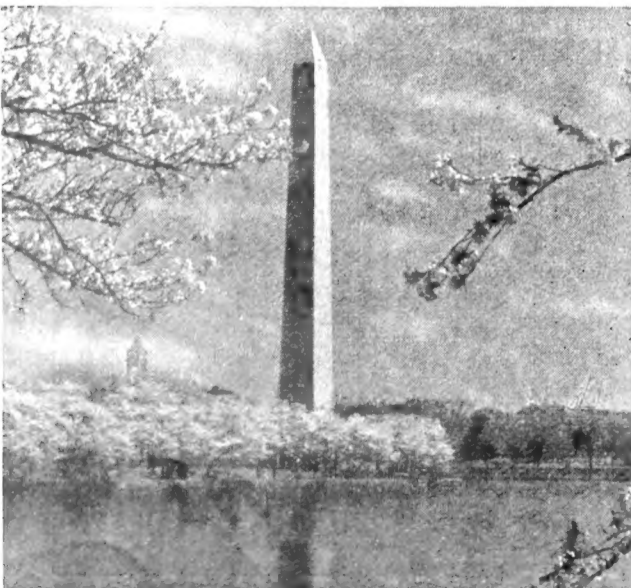
JAPANESE FLOWERING CHERRY. 3-4 ft., \$1.75 each, \$20.00 per doz.; 4-5 ft., \$2.50 each, \$25.00 per doz.

Japanese Weeping Flowering Cherry. 5-6 ft., \$4.00 each.

Larch, European. 3-4 ft., \$2.00 each; 4-6 ft., \$3.00 each; 6-8 ft., \$3.50 each.

Linden. 6-8 ft., \$2.50 each, \$25.00 per doz.; 8-10 ft., \$3.00 each, \$30.00 per doz.; 1½-2 in. caliper, \$3.50 each.

Magnolia Soulangeana. Purplish red tulip-like flowers which appear early in spring before the foliage. 2-3 ft., \$4.00; 3-4 ft., \$5.00.



Japanese Flowering Cherry

Maple, Ashleaf or Manitoba Maple. Rapid growing shade tree. 8-10 ft., \$1.75 each, \$18.00 per doz.; 10-12 ft., \$2.25 each, \$25.00 per doz. 10-12 ft., \$2.25 each, \$25.00 per doz.

MAPLE, NORWAY. Well-known popular American shade tree. 6-8 ft., \$1.75 each, \$20.00 per doz., \$125.00 per 100; 8-10 ft., \$2.50 each, \$27.50 per doz., \$200.00 per 100; 10-12 ft., \$3.50 each, \$36.00 per doz.; 1½-2 in. caliper, \$4.50 each; 2-2½ in. caliper, \$6.00 each, \$50.00 per doz., 2½-3 in., \$10.00 each.

Maple, Scarlet. Blood red foliage in early Spring and late Fall. 4-6 ft., \$1.50 each; 6-8 ft., \$2.25 each; 8-10 ft., \$3.00 each.

MAPLE, SCHWEDLER'S. Resembles Norway except that foliage is blood red in Spring. 6-8 ft., \$3.00 each; 8-10 ft., \$4.00 each, 1½-2 in. caliper, \$7.50 each.

Maple, Silver. Fastest growing of all Maples. 5-6 ft., 75c each, \$7.50 per doz., \$45.00 per 100; 6-8 ft., \$1.00 each, \$10.00 per doz., \$65.00 per 100; 8-10 ft., \$1.50 each, \$15.00 per doz., \$85.00 per 100; 10-12 ft., \$2.50 each, \$25.00 per doz., \$150.00 per 100; 2-2½ in. caliper, \$3.75 each.

Maple, Sugar. Resembles Norway, but grows into a larger tree. Very desirable for streets and campuses. 6-8 ft., \$2.25 each, \$24.00 per doz.; 8-10 ft., \$3.00 each, \$30.00 per doz.; 10-12 ft., \$4.00 each, \$40.00 per doz.

Mimosa. Spreading tree. Pink flowers and dark green foliage. 4-6 ft., \$2.00 each, \$20.00 doz.; 6-8 ft., \$2.50 each, \$25.00 per doz.

Oak, Chestnut. Large, long-lived tree; chestnut-like foliage. 6-8 ft., \$2.50 each, \$25.00 per doz.; 8-10 ft., \$3.00 each, \$30.00 per doz.

Oak, Pin. Very desirable for street planting. Rather slow grower but of long life. 6-8 ft., \$2.50 each, \$25.00 per doz.; 8-10 ft., \$3.00 each, \$30.00 per doz.; 10-12 ft., \$4.50 each, \$45.00 per doz.; 2-2½ in. caliper, \$8.00 each.

Oak, Red. Large tree, excellent for lawn or street. 6-8 ft., \$2.50 each, \$25.00 per doz.; 8-10 ft., \$3.00 each, \$30.00 per doz.

Oak, White. One of our best known native Oaks. Long-lived. 6-8 ft., \$2.50 each, \$25.00 per doz.; 8-10 ft., \$3.00 each, \$30.00 per doz.

Plane, American. Resembles Oriental Plane, but has slightly larger leaves. 8-10 ft., \$2.25 each, \$25.00 per doz.; 10-12 ft., \$3.50 each, \$36.00 per doz.

Plane, Oriental. Desirable as street tree. Resists smoke better than any other shade tree. 6-8 ft., \$1.75 each, \$18.00 per doz.; 8-10 ft., \$2.25 each, \$25.00 per doz., \$175.00 per 100; 10-12 ft., \$3.00 each, \$30.00 doz., \$225.00 per 100; 1½-2 in. caliper, \$3.50 each.

POPLAR, LOMBARDY. Tall, slender tree; especially desirable for driveways and backgrounds. 5-6 ft., 65c each, \$6.50 per doz., \$35.00 per 100; 6-8 ft., 80c each, \$8.00 per doz., \$45.00 per 100; 8-10 ft., \$1.25 each, \$12.50 per doz., \$65.00 per 100; 10-12 ft., \$1.50 each, \$15.00 per doz., \$85.00 per 100.

Poplar, Simoni. New variety resembling Lombardy; more compact; longer lived. 10-12 ft., \$1.75 each, \$17.50 per doz.

Poplar, Tulip. A rapid grower, native American variety. Broad leaf and good spreading form. 6-8 ft., \$2.00 each, \$20.00 per doz.; 8-10 ft., \$3.00 each, \$30.00 per doz.; 10-12 ft., \$3.75 each, \$36.00 per doz.

VARNISH TREE, or GOLDENRAIN TREE. Native of China. Clusters of lemon yellow flowers in Midsummer. 6-8 ft., \$2.50 each; 8-10 ft., \$3.50 each.

Willow, Weeping. Used especially for planting about streams and in low land. 6-8 ft., \$1.50 each, \$15.00 per doz., 8-10 ft., \$2.50 each.

ROSES

THE IMPERIAL DOZEN

Of the thousands of new varieties on the market we have selected the following twelve for our "Imperial Dozen." Each of these Roses has some outstanding meritorious feature.

Chas. P. Kilham. Brilliant orange and glowing scarlet.

E. G. Hill. Full double bloom of crimson scarlet retaining its color until the petals fall.

Etoile de Hollande. "The Great Red Rose Without a Fault."

Mevrouw G. A. Van Rossem. Gold, red, tints of yellow and rich copper veining.

Miss Rowena Thom. Fiery rose and mauve with old gold center.

Mme. Edouard Herriot. Coral red and orange.

Mrs. P. S. Du Pont. Tapering, reddish gold buds and double, golden yellow flowers.

Pres. Herbert Hoover. Cerise pink, flame scarlet, and copper yellow.

Rev. F. Page-Roberts. Large blooms golden inside and red outside.

Roslyn. Beautifully tapering buds and large, double flowers of golden yellow, with deep orange shading on reverse of petals.

Talisman. Combinations of gold, apricot, yellow, pink, old rose, and scarlet.

Ville de Paris. Pure yellow; very profuse. 2 yr. No. 1, 85c each, \$8.50 doz., \$70.00 per 100.

GOLD MEDAL HYBRIDS

American Beauty. Rich, dark carmine. Angele Pernet. Brownish orange blooms of excellent shape.

Betty. Salmon pink with gold centers.

Betty Uprichard. Carmine and copper outside and salmon pink inside.

Dame Edith Helen. Immense; very double; fragrant; clear pink.

Duchess of Wellington. Saffron yellow, stained deep crimson; fragrant.

Frau Karl Druschki. Finest white Rose.

Golden Ophelia. Gorgeously beautiful bronze.

Gruss an Teplitz. Medium-sized double blooms of brilliant crimson with velvety shadings and intense fragrance.

J. J. L. Mock. Silvery pink against deep carmine background.

Joanna Hill. Large, long buds and deep, full flowers of fine creamy yellow, flushed with orange at the base.

Kaiserin Auguste Viktoria. Double white with creamy center.

Lady Ashtown. Satiny buds and blooms of deep shining pink with a yellow glow at base of petals.

Lady Hillingdon. Rich ochre yellow; very fragrant.

Lady Margaret Stewart. Deep sunflower yellow heavily veined and splashed with orange scarlet.

Mrs. Chas. Bell. Lovely shell pink buds and blooms of fine globular form with shadings of soft salmon.

Pink Radiance. Carmine pink; very fragrant.

Red Radiance. Brilliant red; very fragrant.

Sensation. Sweetly scented, crimson scarlet flowers.

Souv. de Claudius Pernet. Striking Sunflower Yellow.

Souv. de Georges Pernet. Rich Oriental red tipped with carmine and gold.

Sunburst. Yellow, suffused orange; very fragrant. White Killarney. Snow white with touch of yellow in center.

Willowmere. Rich pink with yellow glow. Price: Mail Order Size, 55c each, \$6.00 per doz.; 2 yr., No. 1, 75c each, \$7.50 per doz., \$60.00 per 100.

CLIMBING ROSES

American Beauty. Rich, dark carmine. American Pillar. Brilliant crimson pink; white center.

Dr. W. Van Fleet. Appleblossom pink. Very floriferous.

Paul's Scarlet Climber. Intense scarlet flowers.

Silver Moon. White with golden anthers. Price: Mail Order Size, 55c each, \$6.00 per doz.; 2 yr. No. 1, 75c each, \$7.50 per doz., \$60.00 per 100.

NEW DAWN

New Everblooming Dr. Van Fleet

Has recently been granted a patent. Possesses all the fine qualities of Dr. Van Fleet and is a continuous bloomer. \$2.00 each, postpaid.

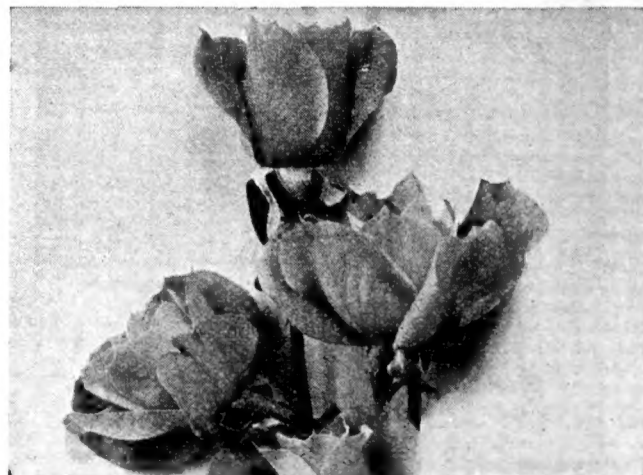
MISCELLANEOUS ROSES

Baby Rambler. Dwarf plant; small blooms; ever-blooming; in red, white and pink.

Hugonis. Yellow flowers; large, robust bush.

Rosa Rugosa. White or red; very hardy; large shrub.

Wichuraiana. Hardy, creeping Rose suitable for covering banks. Single white flowers. Price: Mail Order Size, 55c each, \$6.00 per doz.; 2 yr., No. 1, 75c each, \$7.50 per doz., \$60.00 per 100.



Rose, Talisman

PERENNIALS

Your garden is not complete without perennial borders and perennial beds. Consult our Landscape Department for help in designing and planting perennial beds.

*Indicates varieties suitable for Rock Gardens. 20c each, \$2.00 per doz., \$15.00 per 100. except as noted

Achillea (Milfoil).

Millefolium Kelwayi. Magenta red. June to September. 40 in.

**Ptarmica*, The Pearl. Pure white. All Summer. 2 ft.

**Tomentosa Aurea*. Yellow. June. 6 in.



Alyssum (Madwort).

**Rostratum*. Yellow. June and July. 1 ft.

**Saxatile Compactum*. Bright yellow. Early Spring. 1 ft.

Anthemis Kelwayi (Hardy Marguerite). Yellow, daisy-like flowers. July and August. 2 ft.

Anchusa Dropmore. Blue flowers in May and June. 3 ft.

Anemone (Windflower).

St. Brigid. Various colors. Spring. 18 in.

Aquilegia (Columbine) Long Spurred Hybrids.

**Mrs. Scott Elliott's Strain*. Mixed colors. June. 18 in.

Arabis (Rockcress).

**Alpina*. White and Pink. April and May. 12 in.

Armeria Alpina. **Lauchena*. Rosy red. May and June. 4 in.

Artemisia (Sagebrush).

Silver King. Silver colored stems and foliage. 30 in.

*Asters, Hardy. Alpina Mixed and Light Blue. May and June. 6 to 8 in.

ASTERS

Asters. New, hardy, improved, named varieties. September and October.

Climax. Lavender-blue, or white. 4 ft.

**Marjorie*. Large, rose-pink flowers. Dwarf. 1 ft.

**Mauve Cushion*. Silvery mauve. 9 to 10 in.

N. A. Barr's Pink. Pink. 4 ft.

**Nancy*. Light pink. Dwarf. 1 ft.

Novae-Angliae Rosea. Deep reddish violet. 4 ft.

Queen Mary. Pleasing blue tinted lavender. 3 ft.

**Ronald*. Lilac-pink. Dwarf. 1 ft.

Sam Banham. Large, semi-double white. 3 ft.

**Snowsprite*. Large, semi-double white flowers. Dwarf. 1 ft.

Tartaricus. Large, bluish violet. 6 ft.

**Victor*. Light lavender-blue. Dwarf. 8 in. Price 30c each; \$3.00 per doz., \$20.00 per 100.

**Aubrietia* (Rainbow Rockcress). Spring and early Summer. 6 in.

**Eyri* (Rockcress). Lilac rose. April to June. 6 in.

Baptisia Australis (False Indigo). Indigo blue. Midsummer. 2 to 4 ft.

**Campanula Rotundifolia* (Blue Bells of Scotland). Blue. June to August. 1 ft.

**Candytuft* (Hardy Candytuft). White. June-July. 12 in.

Carnation (Hardy Carnation). Mixed colors. June-July. 2 ft.

Centaurea Montana (Perennial Cornflower). Large violet-blue flowers. July to September. 2 ft.

**Cerastium Tomentosum* (Snow-in-Summer). Silver foliage, white flowers. May. 6 in.

**Cheiranthus Allioni* (Siberian Wallflower). Orange. Spring and early Summer. 16 in.

Chrysanthemum (Hardy Chrysanthemum). Pink, red, white and yellow. Fall. 2 ft.

Chrysanthemum Maximum (Shasta Daisy).

CHRYSANTHEMUMS

Chrysanthemums, Hardy. Latest, improved, named varieties:

Aladdin. Decorative. Perpetual Flowering Chrysanthemum, blooming from June to November. Warm, coppery bronze.

Pink Cushion, also known as *Amelia*. Completely covered with pink azalea-like blossoms from July to frost. Dwarf, not over 10 in.

Adolph. Pompon. Rose-pink. August.

Alice Howell. Aster flowering. Rich copper-orange. October.

Autumn Glow. Large flowering. Rosy crimson. November.

Button Yellow. Button. Copper-yellow. October.

Crimson Beauty. Pompon. Bright crimson. November.

Crimson Splendor. Aster flowering. Crimson and deep garnet tone. September.

Eden. Decorative. Bright rose. September.

Firebird. Pompon. Red. September.

Glada. Pompon. Soft salmon pink. August.

Glory of Seven Oaks. Aster flowering. Golden yellow. October.

Granny Scovill. Large flowering. Warm, coral-bronze. October.

Gypsy Girl. Aster flowering. Bright crimson.

Gypsy Queen. Large flowering. Flashy Gypsy colors. October.

Indian. Aster flowering. Popular red. October.

Innocence. New Korean Hybrid. Dwarf white. October.

Jean Cumming. Decorative. White. September.

Jean Treadway. Decorative. Pink. September.

Jewell. Button. Rose-pink. September.

Lillian Doty. Pompon. Shell pink. October.

Little Red Foot. Button. Red-mahogany around a tight dark center. October.

Marie Antionette. Large flowering. Rosy pink. October.

Model of Perfection. Pompon. White. September.

October Girl. Decorative. Flashy pink. October.

R. Marion Hatton. Pompon. Canary yellow. September.

Rose Charm. Pompon. Bright rose-pink. October.

Rose Travena. Semi-button. Deep pink.

Ruth Cumming. Large flowering. Terra-cotta red. September.

Skibo. Button. Yellow. October.

Snow-white. Pompon. Pure white.

Sunburst. Decorative. Garnet-copper-gold. August.

Vivid. Decorative. New rosy crimson. September.

White Doty. Pompon. Large, pure white flowers. October.

Wolverine. Decorative. Bright yellow. August.

Zaza. Decorative. Yellow and orange. September.

Price 30c each; \$3.00 per doz., \$20.00 per 100.

Convallaria (Lily-of-the-Valley). White, fragrant blossoms. May. 6 in.

Coreopsis (Coreopsis). Golden yellow, daisy-like flowers. All Summer. 3 ft.

Delphinium (Perennial Larkspur).

Chinensis. Gentian-blue flowers. June. 3-4 ft.

English Hybrids, *Wrexham Strain*. Rich and varied tints from blue to scarlet. June. 3-4 ft.

Dianthus Barbatus (Sweet William). Mixed. May and June. 12 in.

Dianthus Plumarius (Pinks).

**Deltoides*, *Brilliant*. Rose. Summer. 6 in.

**Rose Cushion*. New, dwarf, compact. Excellent for rock gardens.

Dicentra (Bleedingheart). Heart-shaped, rose colored flowers. April or May. 18 in.

Digitalis (Foxglove). Improved Hybrid Varieties of various colors. June-July. 3 to 4 ft.

Echinops Ritro (Globe Thistle). Metallic blue flowers, thistle-like foliage. July and August. 3 to 4 ft.

Erigeron Speciosus (Fleabane). Large, blue, aster-like flowers. June and July. 2 ft.

Gaillardia (Blanketflower). Orange red. May to October. 2 ft.

Golden Glow (*Rudbeckia laciniata*). Large, double, yellow, dahlia-like flowers. Late Summer. 6 ft.

Gypsophila Paniculata (Babysbreath). White. Early Summer. 40 in.

**Repens*. White. July and August. 6 in.

Helianthemum (Rock or Sunrose).

**Mutabile*. Mixed colors. July and August. 8 to 12 in.

Helianthus (Perennial Sunflower).

Harvest Moon. Rich yellow. September. 4 ft.

Maximiliani. Golden yellow. October. 6 ft.

Heliopsis (Orange Sunflower).

Pitcheriana. Golden yellow. July to August. 3 ft.

Hibiscus (Mallow Marvels). White, pink and red. Midsummer. 4 ft.

Hollyhocks. Double and single. Mixed colors. Midsummer. 4 to 5 ft.

Lathyrus (Perennial Sweet Pea). Mixed colors.

June-October. Climbing.

Lavandula (Sweet Lavender). Fragrant, hardy. July. 2 ft.

Liatris (Gay-feather). Purple. July and August. 3 ft.

**Linaria Cymbalaria* (Kenilworth Ivy). Lavender. Summer. 3 in.

Linum (Flax).

**Perenne*. Pale blue. July and August. 12 in.

Lychnis (Campion).

**Alpina*. Rose. Midsummer. 4 in.

Chalcedonica. Scarlet. All Summer. 3 ft.

Viscaria Splendens. Crimson flowers. June

Lythrum Roseum Superbum (Rose Loosestrife).

June and July. Almost evergreen. 2 ft.

Lythrum Roseum Superbum (Rose Loosestrife).

Rose pink July-September. 3 ft.

Mertensia Virginica (Virginia Bluebells). Blue flowers fading to clear pink Early Spring. 1 ft.

Monarda (Beebalm). Red. July. 3 ft.

Myosotis (Forget-Me-Not).

**Palustris*. Blue. Early Spring. 6 in.

**Nepeta Mussini* (Ground Ivy). Lavender-blue flowers. June and July. 1 ft.

**Papaver Nudicaule* (Iceland Poppy). Orange colored. All Summer. 1 ft.

Papaver Orientale (Oriental Poppy). Crimson scarlet. May-June. 2 ft.

Pentstemon (Beardtongue). Mixed colors. Summer. 3 to 4 ft.

PHLOX

Phlox Columbia. New U. S. Patented Variety. Resistant to mildew, red spider, and other common diseases. Considered the finest Phlox known. Pink. 18 in. Mid-summer. 50c each, \$5.00 per doz.

Assorted Colors (Unnamed). Midsummer. Named Varieties (See catalogue). 25c each, \$2.50 per doz.

**Divaricata*. Dwarf. Fragrant, lavender flowers. Summer.

**Phlox Subulata*. Pink, lavender and white. April and May. 4 in.

PHLOX SUBULATA—NAMED VARIETIES

**Alba*. Moss-like foliage. Sheet of white flowers in April and May.

**Appleblossom*. New and distinct variety. The name accurately describes the color. 30c each, \$3.00 per doz.

**Atrolilacina*. Lilac-colored flowers. May. 30c each, \$3.00 per doz.

**Atropurpurea*. A new variety with intense red flowers. 30c each, \$3.00 per doz.

**G. F. Wilson*. Starry, lavender flowers. April-May. 30c each, \$3.00 per doz.

**Rosea*. Best known, popular pink.

**Vivid*. Bright fiery rose. Dwarf. Compact clumps, 30c each, \$3.00 per doz.

Physostegia (False Dragonhead).

Virginica. Rosy lilac. July and August. 3 ft.

Platycodon (Balloonflower). Blue and white. Summer. 1 to 2 ft.

**Primula* (Hardy Primrose). Yellow. May. 6 in.

Pyrethrum (Pyrethrum). Red, pink, and mixed. June. 18 in.

Kelwayi. Dark blood red. June. 18 in.

Salvia (Meadow Sage).

Azurea. Sky blue. August and September. 3 ft.

Turkestanica. Light pink. July-September. 4 ft.

Saponaria.

**Ocymoides Splendens*. Pink, trailing. Summer.

Scabiosa. Pink and lavender. June. 18 in.

Scutellaria (Skullcap).

**Coelestina*. Blue. Summer. 1 ft.

Sedum (Stonecrop).

**Acre*. Foliage green, flowers bright yellow. Prostrate.

**Album*. Foliage green, flowers white. May-July. 2 to 3 in.

**Eversii*. Rose colored flowers in October. Sub-trailing habit.

**Kamtschaticum*. Orange colored flowers. Prostrate green foliage turning golden in Autumn.

**Middendorffianum*. Yellow. Creeping. July.

**Sarmentosum*. Bright yellow flowers. June, July. Dwarf.

Spectabile. Light green foliage. Rose colored flowers. August and September. 18 in.

**Stoloniferum*. Evergreen leaves, pink flowers. July and August. 6 in.

**Sempervivum* (Hen and Chickens). Rosette-like thick leaves.

Stachys Lanata. Silver leaves, purple flowers. 24 in.

Stokesia (Cornflower Aster). Sky blue flowers. July-October. 16 in.

Thymus (Thyme).

**Serpyllum*. Creeping purple flowers. Summer. 10 in.

Tritoma (Red Hot Poker). Long spikes of scarlet flowers. Midsummer. 30 in.

Tunica (Coatflower).

**Saxifraga*. Light pink. May. 10 in.

Verbascum Hybrids (Mullein). Mixed. Mid-summer. 2 ft.

Veronica (Speedwell).

**Longifolia*. Blue. June to October. 2 ft.

**Repens*. Pale blue. Dwarf branching. May and June. 6 in.

**Viola* (Tufted Pansies). Blue, yellow and mixed.

**Yucca* (Adams Needle). Creamy white flowers in June and July. 4 ft.

Variegated Grasses. 50c per clump, \$5.00 doz.

ROOTS AND TUBERS CANNAS

Great improvement has been made in Cannas in the last few years, not only in color and size of bloom, but the extension of the blooming period. New varieties now bloom throughout the Fall instead of a couple of weeks as the old varieties did.

	Doz.	100
A good mixed assortment	\$1.00	\$ 6.00
Named varieties	1.50	10.00

City of Portland. Beautiful dwarf pink.
Eureka. Most popular pure white. 3-4 ft. in height.
King Humbert. Red. Bronze foliage.
King Humbert. Yellow. Green foliage.
President. Red crimson. Most popular red. Vigorous. Free bloomer.

GLADIOLUS

The Gladiolus continues to be our most popular cut flower. No flower is more easily grown. Gladiolus bloom within ten weeks from time of planting and continue to bloom through late Summer and Fall. They should be planted at intervals of about two weeks apart.

By all means plant some of the Autumn Queen. This odd variety should be planted in early Spring in order to get best results. Unlike most of the other varieties, the Autumn Queen will bloom from the first of September until frost. The spikes will often be 3 to 4 feet long.

	Doz.	100
Good mixture	\$0.50	\$3.85
Named varieties	.65	4.75

In Gladiolus we offer the following:
Alice Tiplady. Coppery bronze. Early.
Autumn Queen. Creamy yellow suffused pink. Continuous bloomer.
Evelyn Kirtland. Rose pink, dark at the center.
Gold Eagle. Deep rich yellow. Ruffled. Early.
Golden Dream. Deep yellow, large.
Joe Coleman. One of the most popular early reds.
Los Angeles. La France pink.
Mrs. Francis King. Light scarlet.
Orange Queen. Rich, golden orange.
Peace. White, pink throat. Late.
Quinton. Red. Early.
Schwabens. Clear canary-yellow.
Wilbrinck. Pink with a soft yellow blotch on lower petals. Early.

IRIS

	Each	Doz.	100
German and Spanish			
Mixed	\$0.15	\$1.35	\$ 6.75
Named Varieties, as follows	.20	2.00	10.00

Bridesmaid	Her Majesty	Purple Queen
Candelabra	Isoline	Quaker Lady
Caprice	Juanita	Queen Caterina
Crimson King	Loreley	Queen of May
Dwarf Blue	Marsh Marigold	Red Cloud
Dr. Bernice	Mme. Chereau	Roseway
Dwarf White	Monsignor	Rhein Nixe
Fairy	Pallida	Sherwin
Florentina alba	Dalmatica	Wright
Gajus	Peacock Eye	Susan Bliss
Georgia	Perfection	Windham
Glory of	Prosper	Wyomissing
Reading	Laugier	

GOLD MEDAL IRIS

Price: 25c each, \$2.50 per doz., \$12.00 per 100

Afterglow	Mme. Gaudichau
Albert Victor	Magnifica
Ambassadeur	Mother of Pearl
Dream	Princess Beatrice
Lent A. Williamson	Seminole
Lord of June	Shekinah

Japanese Iris. Assorted colors. 20c each, \$2.00 per doz., \$10.00 per 100.
Siberian Iris. White and blue. 15c each, \$1.35 per doz., \$6.75 per 100.

GRASS SEED

Burson Evergreen Lawn Mixture.—A scientifically prepared Grass Seed Mixture which produces a beautiful sod in a few weeks and is green throughout the year. Extensively used for small home grounds, as well as public parks, college campuses, large estates, and wherever a beautiful, permanent sod is desired. Due to the great demand for this Mixture, it costs no more than many ordinary Lawn Mixtures. Per lb., postpaid, 55c; 10 lbs., postpaid, \$5.00; 100 lbs., \$37.50.
Shady Lawn Mixture. Produces perfect sod in shady places. Per lb., 65c, postpaid; 10 lb. bag, \$5.25, postpaid; per 100 lbs., \$45.00, f.o.b. Waynesboro, Va.

Save Your Peach Trees

With Paradow, which kills the borers. Apply in September and October, approximately 1 oz. per tree. 1 lb., 45c; 10 lbs., 34c per lb.; 25 lbs., 32c per lb.; 50 lbs., 30c per lb.; 100 lbs., 28c per lb., delivered. Larger quantities quoted on request.

Pomo-Green with Nicotine

Complete protection against Black Spot, Mildew, Leaf-Eating Insects, Aphid.

Pomo-Green (endorsed by the American Rose Society).

1 lb. can, postpaid, \$0.75
5 lb. can, postpaid, 3.00



Save Your Evergreens

With Dogzoff. Keeps the dogs away. A harmless, unoffensive spray with puts the pup to flight. 60c per bottle, postpaid.

Derrisol controls aphid, red spider, leaf hopper, plant lice, and numerous other pests. 1 lb. can,

DAHLIAS

We have in the past made the common error of offering too many varieties of Dahlias—confusing the average planter who is interested in a limited quantity of the best. Why experiment with so many varieties while from the following list a selection can be made to meet the requirements of the most experienced Dahlia grower?

Barbara Redfern. December. Gold and old rose.
Champagne. December. Golden champagne.
Commodore. Dec. Immense, brilliant yellow. Long, stiff stems.
Donna California. Dec. Deep rose suffused with lavender. Largest Dahlia in this color.
Eagle Rock Wonder. SC. Orange and buff; tremendous size. An outstanding Dahlia. 75c each.
Elinor Vanderveer. Dec. Large, rose pink.
Harry Mayer. December. Light purple flowers shaded deeper on reverse.
Jane Cowl. Dec. Immense blooms of glistening bronzy buff and salmon shades.
Jersey Beauty. Dec. Rose pink. Most popular cut flower variety.
Kathleen Norris. Dec. Rose deepening to mellow pink. Gigantic blooms, good foliage.
Monmouth Champion. Dec. Flame color. A constant prize winner.
Mrs. I. de Ver Warner. Dec. Orchid. One of the best.
Robert Bloomfield. White. Good stems. 75c each.
Sagamore. Dec. Large golden yellow. Good stems.
Sanhican's Blue Bird. Dec. Large, stout stems.
World's Best White. December. Best white Dahlia known. 50c each.

Some of the above varieties have sold for as much as \$25.00 per tuber. All are still good and among the best. We offer any of the above varieties at 45c each, \$4.50 per doz., postpaid, with exceptions noted.
Good Mixed Varieties, unnamed, \$2.00 per doz.

SPRING FLOWERING BULBS

Sold for Fall Delivery Only.

Crocus, Good Mixture. 65c per doz., \$3.75 per 100.
Hyacinths, Mixed. \$1.25 per doz., \$7.35 per 100, \$65.00 per 1,000.
Hyacinths, Named Varieties. \$1.65 per doz., \$7.85 per 100, \$75.00 per 1,000.
Narcissus, Paperwhite, Emperor, Empress, Sir Watkins. \$1.25 per doz., \$7.25 per 100.
Tulips, Single Early, Double Early, Cottage and Breeder Tulips. 85c per doz., \$4.75 per 100, \$38.00 per 1,000.
Tulips, Darwin Mixed. Red, pink, lavender, white and yellow. 65c per doz., \$3.85 per 100, \$35.00 per 1,000.
Tulips, Darwin Named. 85c per doz., \$4.75 per 100, \$38.00 per 1,000.

PEONIES

	Each	Doz.
Unnamed varieties in pink, red and white	\$0.45	\$4.35
Named varieties as follows	.65	6.50

Albert Crousse. Large, delicate salmon pink. Late.
Claire DuBois. Clear, deep violet-rose. Late.
Duchesse de Nemours. Handsome white Peony with sulphur center.
Edulis Superba. Fragrant. Dark pink. Early.
Felix Crousse. Brilliant red. Fragrant. Midseason.
Festiva Maxima. Pure white with tinge of red.
Mme. Calot. Hydrangea-pink.
Queen Victoria. White splashed crimson.
Rachel. Free blooming bright garnet red.
Rubra Superba. Rich dark red. Late.
Venus. Delicate pink with flesh white collar. Mid-season.

makes 100 gallons spray material, \$2.25 postpaid.

Ask For Quotations on Garden Furniture.

Rose Dust

Controls Black Spot and Mildew on Roses and Grapes. 1 lb. can, 45c, postpaid.

Bordeaux Mixture

An excellent fungus spray. 4 lb. bag, \$1.00, f.o.b. Waynesboro.

Sunoco

Kills Red Spider, which is the most common enemy of evergreens. Also kills San Jose Scale, Rose Scale, Oyster-shell Scale, Pine Leaf Scale, and Euonymus Scale.

Per 1 gal. can, \$1.25. Makes 25 gals. dormant spray material, 100 gals. Summer spray.

Slug Shot

Kills Insects, Bean Beetles, Worms, Slugs, Rose Beetles, Caterpillars, etc. 1 lb. can, 35c, postpaid

German Granulated Peat Moss

Used as a mulch and in poultry houses. 50 lbs., \$1.75; bale approx. 150 lbs., \$4.00; 10 bales, \$35.00, f.o.b. Waynesboro, Va.

Garden and Lawn Fertilizers

We are offering only thoroughly tested brands that we can safely recommend.

Specially Prepared Lawn Fertilizer

Our Lawn Fertilizer has been carefully mixed to produce a beautiful sod. The plant food it contains has been scientifically compounded, carefully tested, and has been found to give the desired results. You cannot have a good sod without properly feeding it. 100 lb. bag, \$3.50; 1 ton, \$65.00.

Boxwood Plant Food

\$3.50 per 100 lbs., f.o.b., Waynesboro, Va.

PRIZE WINNING VARIETIES

75c each, \$7.50 per doz.
Baroness Schroeder. Flesh white, large bloom. Midseason.
Mme. Boulanger. Soft rose bordered silver.
Mareschal Valliant. Large, globular, dark mauve. Very late.
Mary Brand. Deep red. Midseason.
Mons. J. Elie. Glossy lilac pink shaded deep rose at base. Midseason.
Sarah Bernhardt. Mauve rose with silver tip. Late.

LILIES

30c each, \$3.00 per doz., except as noted.
Amaryllis. Blended orange and pink. 60c each, \$6.00 per doz.
Auratum (Goldband Lily). White with a wide gold band down the center of each petal.
Candidum (Madonna Lily). Pure white. Combines well with Larkspur.
Funkia (Plantainlily). Sky blue flowers in July.
Hemerocallis (Daylily). Tall, graceful. Yellow blossoms. Does well in shade or damp land. 20c each, \$2.00 per doz.
Phillipinense Formosanum. New extremely popular; trumpet shaped flowers, white with reddish-brown shadings.
Regal Lily. White flowers suffused with pink. Large sized bulbs, 30c each, \$3.00 per doz. Medium sized bulbs, \$1.50 per doz., \$8.00 per 100.
Tigrinum (Tiger Lily). Orange flowers spotted black.

GROUND COVERS

Bittersweet Evergreen (Euonymus radicans). 2 yr., 50c each, \$5.00 per doz., 3 yr., 75c each, \$7.50 per doz.
Honeysuckle, Hall's. Mail Order Size, 35c each. Standard grade, 50c each, \$5.00 per doz., \$25.00 per 100.
Pachysandra (Japanese Spurge). \$2.00 per doz., \$15.00 per 100.
Vinca Minor (Periwinkle). Useful as a ground cover. Small blue flowers. Mail Order Size Plants, 25c each, \$2.00 per doz. Clumps, 40c each, \$4.00 per doz.

VINES

Mail Order Size, 35c each, \$3.00 per doz., \$20.00 per 100. 2 yr. only.
2 and 3 yr. Standard Grades, 50c each, \$5.00 per doz., \$35.00 per 100, except as noted.
Bittersweet (Celastrus Scandens). Popular for its orange colored berries in Winter.
Boston Ivy. Most popular climber. Clings to walls.
Cinnamon Vine. Rapid growing vine. Climbs 10 to 30 ft.
Clematis, Large Flowering; Andre (red); Duchess of Edinburgh (white); Jackmani (purple). 2 yr. only, \$1.00 each, \$10.00 per doz.
Clematis Paniculata Grandiflora. Useful for trellises. Blooms in masses of white in August.
English Ivy. Popular for covering low walls and as a ground cover in low, shady places. Evergreen.
Kudzu Vine. Desirable for screens where quick effect is necessary. Broad leaves.
Silver Lace Vine. Rapid grower. Covered with masses of white flowers throughout Autumn. 2 year only, 75c each, \$7.50 per doz.
Trumpet Vine (Bignonia). Large, orange scarlet, trumpet shaped flowers.
Virginia Creeper. A native climber. Quick grower.
Wisteria. Purple flowers. Rapid grower.

Bonemeal

50 lb. bag, \$1.85 100 lb. bag, \$3.50
Prices f.o.b. Waynesboro, Va.



The New Soil Conditioner and Plant Food, "Rho-Za-Grow" has taken the guesswork out of Rhododendron growing.

Rhododendrons and their kindred broadleaved evergreens, the Azaleas, Kalmias, Andromedas, etc., are lovely things, but many planters hesitate to plant these aristocratic American shrubs because of their exacting soil requirements.

"Rho-Za-Grow" is a scientifically balanced soil conditioner and plant food. Use it on all plants requiring sour soils. "Rho-Za-Grow" contains exactly the proper balance of acids, neutral plant food, and humus. It sours and lightens the soil, and it has high plant food content.

Apply it to your Rhododendron and Azalea beds, and they will show their appreciation with a wealth of gorgeous blooms and healthy, deep green foliage.

Prices

10 lb. bag, \$1.00 50 lb. bag, \$2.75
25 lb. bag, 1.75 100 lbs., 4.50

Transportation prepaid to points within 600 miles. To more distant points we ship collect but allow 10% discount.